

## **Assessment of Potential Dog Park Areas within the Granville Ward**



**November 2019**

**Prepared by: Linda Wright and Richard Loudon**

**Cumberland Council**

## Methodology

An initial desktop study was performed reviewing open space and reserves within the Granville Ward. Sportsgrounds and small parks with playgrounds were eliminated due to conflict with existing user groups and legislation that states dogs must be 10m away from play spaces. Holroyd Gardens was excluded from the investigation, as a dog off-leash area had already been considered and not supported as part of the recent Plan of Management. Granville Memorial Park was also excluded from the study due to the construction and importance as a new civic and community centre.

The remaining 10 sites were then reviewed against a set of criteria that would determine the suitability and success of a Dog off-leash Park within that location. The following criteria were used:

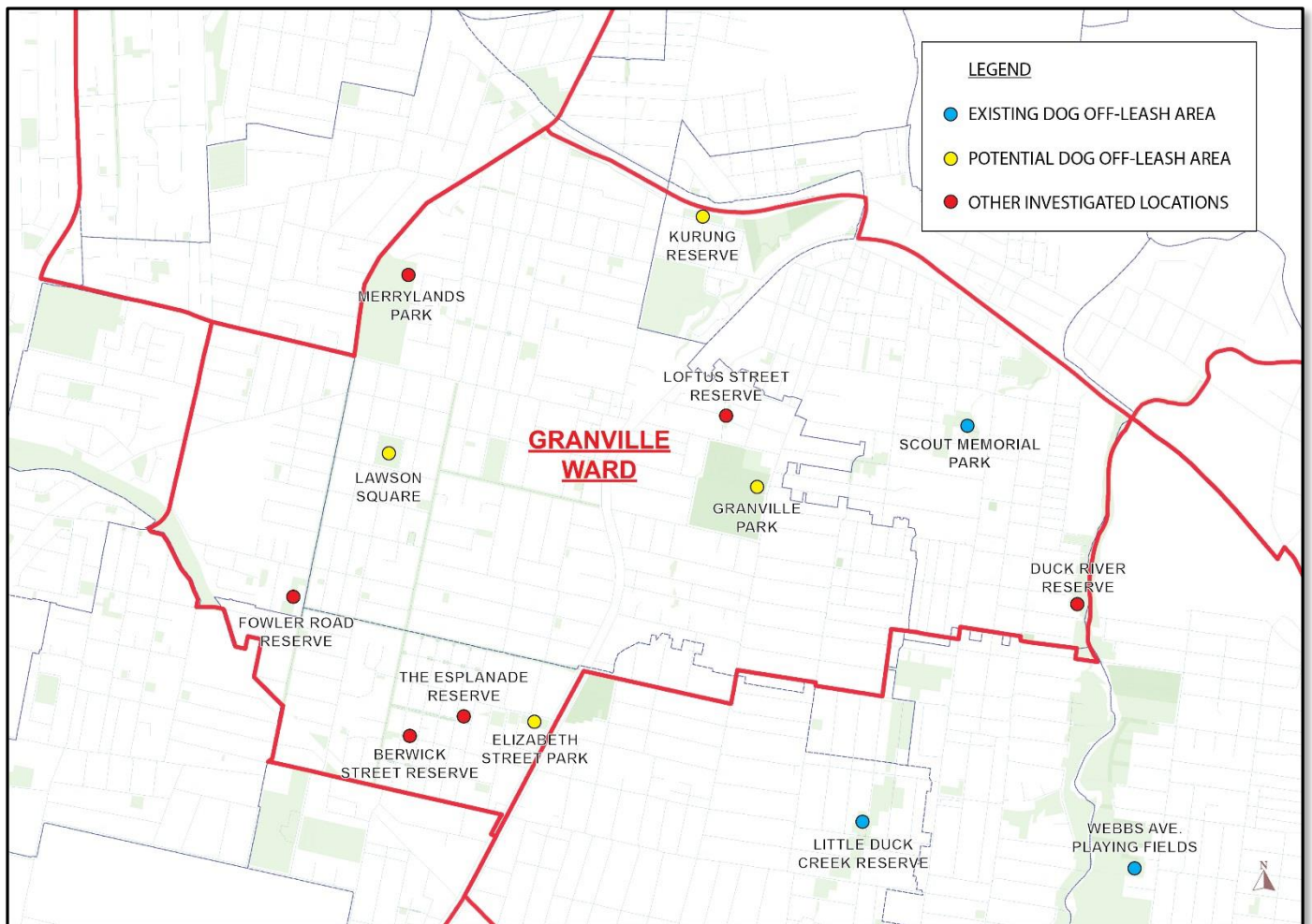
- Appropriate size
- Accessibility
- Footpath connections
- Adequate car parking
- Distance from residential areas
- Natural surveillance
- Associated infrastructure

Site visits were then performed to review the latent site conditions. Stormwater, flooding and service information was also sought for the shortlisted sites and advice sort of council's stormwater engineers

The distribution of the proposed dog parks within the Granville ward and LGA area were also considered.

The existing Dog Off-Leash Park at Scout memorial park was also included for costing for potential embellishments

Map showing distribution of considered sites across the Granville Ward



# Duck Creek Reserve

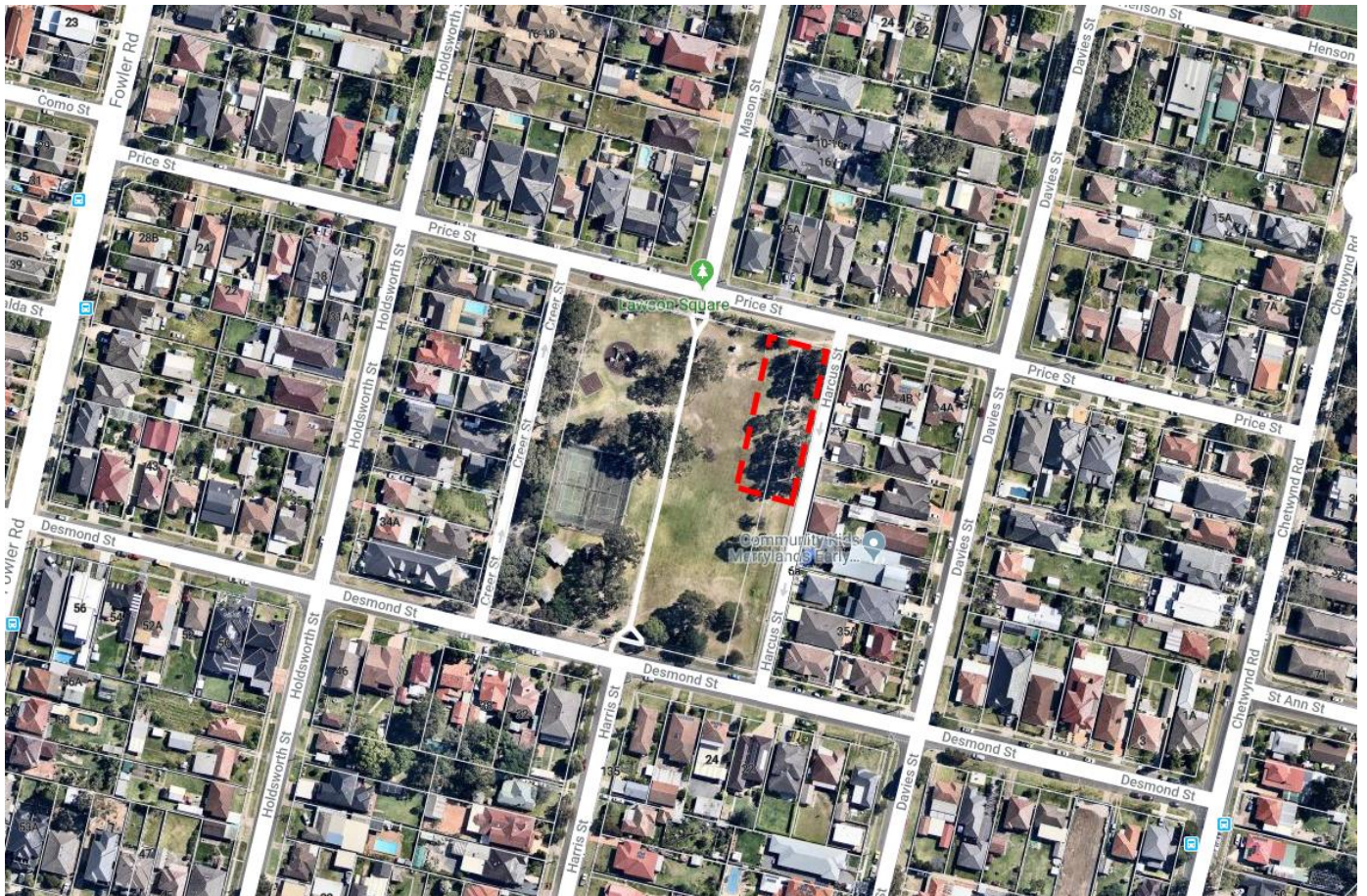
## Between Mimosa and Neilson Street.

Site Suitability Criteria	Y/N	Comments
Appropriate size per Best Practice Standards	N	Limited Size, narrow corridor, biodiversity value
Accessibility/entry to Site	Y	Limited access to site
Pedestrian/footpath connections	Y	Poor pedestrian access from road, good connection to Duck River Corridor
Adequate car parking	N	Lack of Parking availability
Shelter/Shade	Y	Surrounding trees, thick vegetation along creek line
Seating and viewing areas	N	
Toilets	N	
Rubbish bin(s)	N	
Drinking fountain(s)	N	
Good natural surveillance	N	Poor surveillance opportunities, behind housing/trees
Proximity to housing/residential	Y	Close to nearby residents, borders housing



## Lawson Square, Merrylands

Site Suitability Criteria	Y/N	Comments
Appropriate size per Best Practice Standards	Y	(2300sqm)
Accessibility/entry to Site	Y	
Pedestrian/footpath connections	Y	
Adequate car parking	Y	Good street parking availability
Shelter/Shade	Y	
Seating and viewing areas	Y	
Toilets	Y	Existing amenities
Rubbish bin(s)	Y	
Drinking fountain(s)	Y	Water connection availability for dog fountain
Good natural surveillance	Y	
Proximity to housing/residential	N	No direct contact with residential properties



## Kurung Reserve, Holroyd

Site Suitability Criteria	Y/N	Comments
Appropriate size per Best Practice Standards	Y	Good sized area (6300sqm)
Accessibility/entry to Site	N	
Pedestrian/footpath connections	Y	Access to existing cycle/pedestrian path
Adequate car parking	Y	Street and Sportsground parking
Shelter/Shade	Y	Good tree cover
Seating and viewing areas	N	
Toilets	N	
Rubbish bin(s)	N	
Drinking fountain(s)	N	
Good natural surveillance	Y	Trees may need thinning, secluded area
Proximity to housing/residential	Y	Close but do not directly border
<b>Additional Comments:</b>		
Steep Terrain		



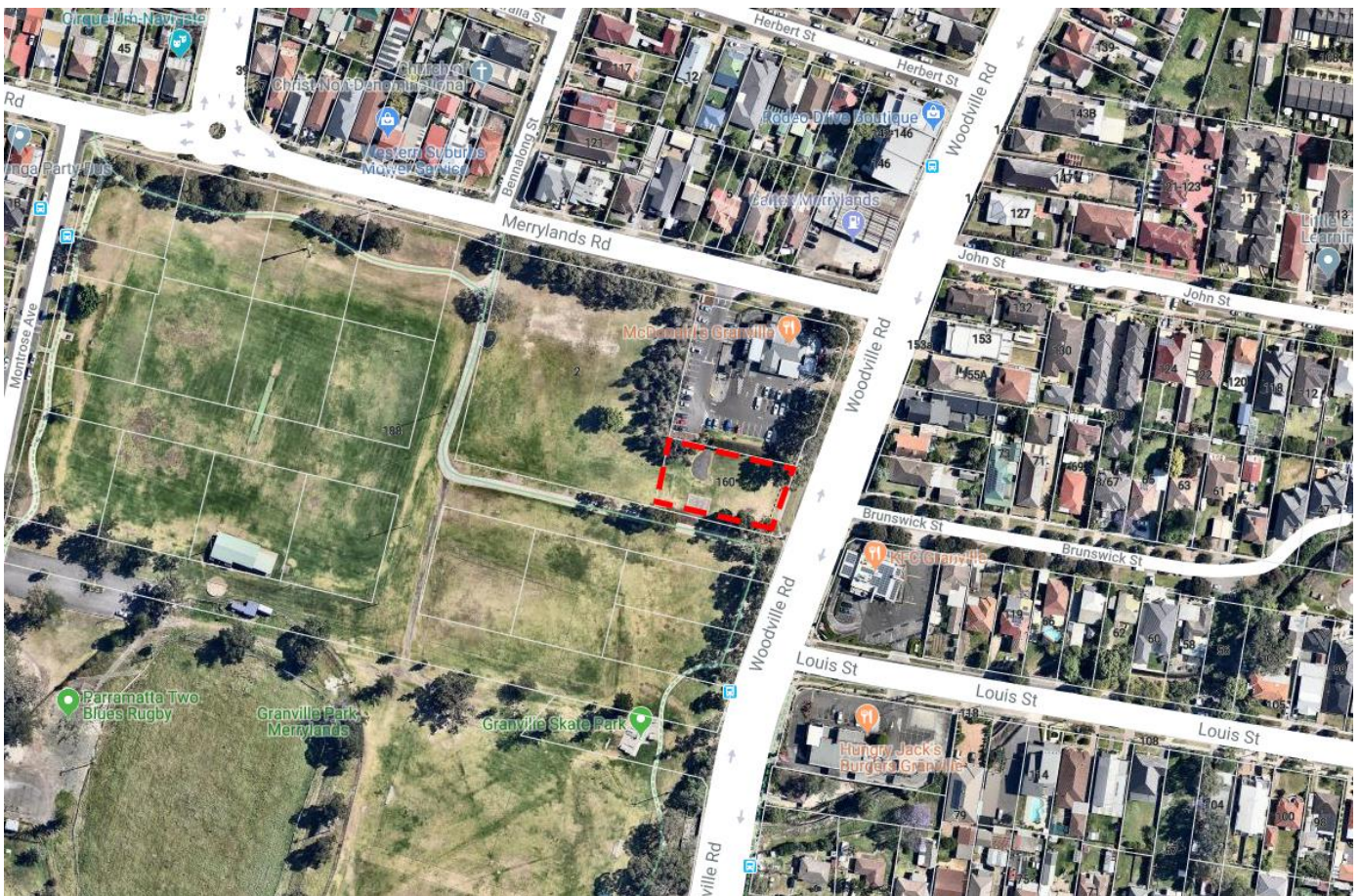
## Elizabeth Street Park, Guildford

Site Suitability Criteria	Y/N	Comments
Appropriate size per Best Practice Standards	Y	Good size, open area (3600sqm)
Accessibility/entry to Site	Y	Corridor, connections
Pedestrian/footpath connections	N	
Adequate car parking	Y	Street Parking
Shelter/Shade	Y	Good shade
Seating and viewing areas	N	
Toilets	N	
Rubbish bin(s)	N	
Drinking fountain(s)	N	
Good natural surveillance	Y	
Proximity to housing/residential	Y	Close to some residents



# Granville Park, Granville

Site Suitability Criteria	Y/N	Comments
Appropriate size per Best Practice Standards	Y	Selected area good size (1900sqm)
Accessibility/entry to Site	Y	Good access, barrier at main road
Pedestrian/footpath connections	Y	Perimeter pathway
Adequate car parking	Y	Parking available, however, only private parking near to selected site
Shelter/Shade	N	Limited
Seating and viewing areas	N	
Toilets	N	
Rubbish bin(s)	N	
Drinking fountain(s)	N	
Good natural surveillance	Y	Good surveillance, on main road
Proximity to housing/residential	N	Separation via Woodville Road





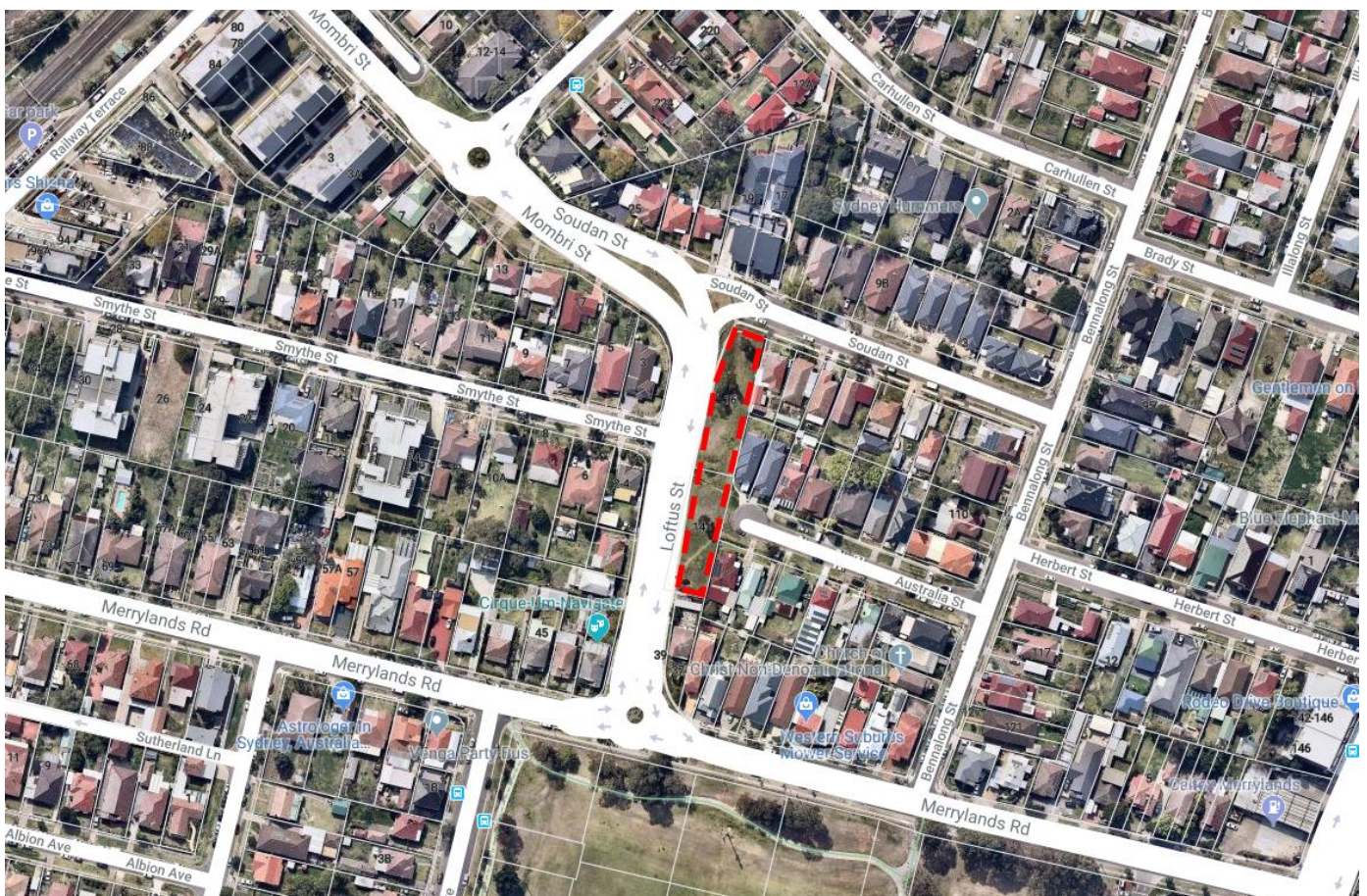
## Esplanade Reserve, Guildford

Site Suitability Criteria	Y/N	Comments
Appropriate size per Best Practice Standards	N	Small area (1000sqm)
Accessibility/entry to Site	Y	Good access
Pedestrian/footpath connections	Y	
Adequate car parking	Y	Street parking
Shelter/Shade	Y	
Seating and viewing areas	N	
Toilets	N	
Rubbish bin(s)	N	
Drinking fountain(s)	N	
Good natural surveillance	Y	Surrounding streets
Proximity to housing/residential		
Suitable for a small dog only dog park		



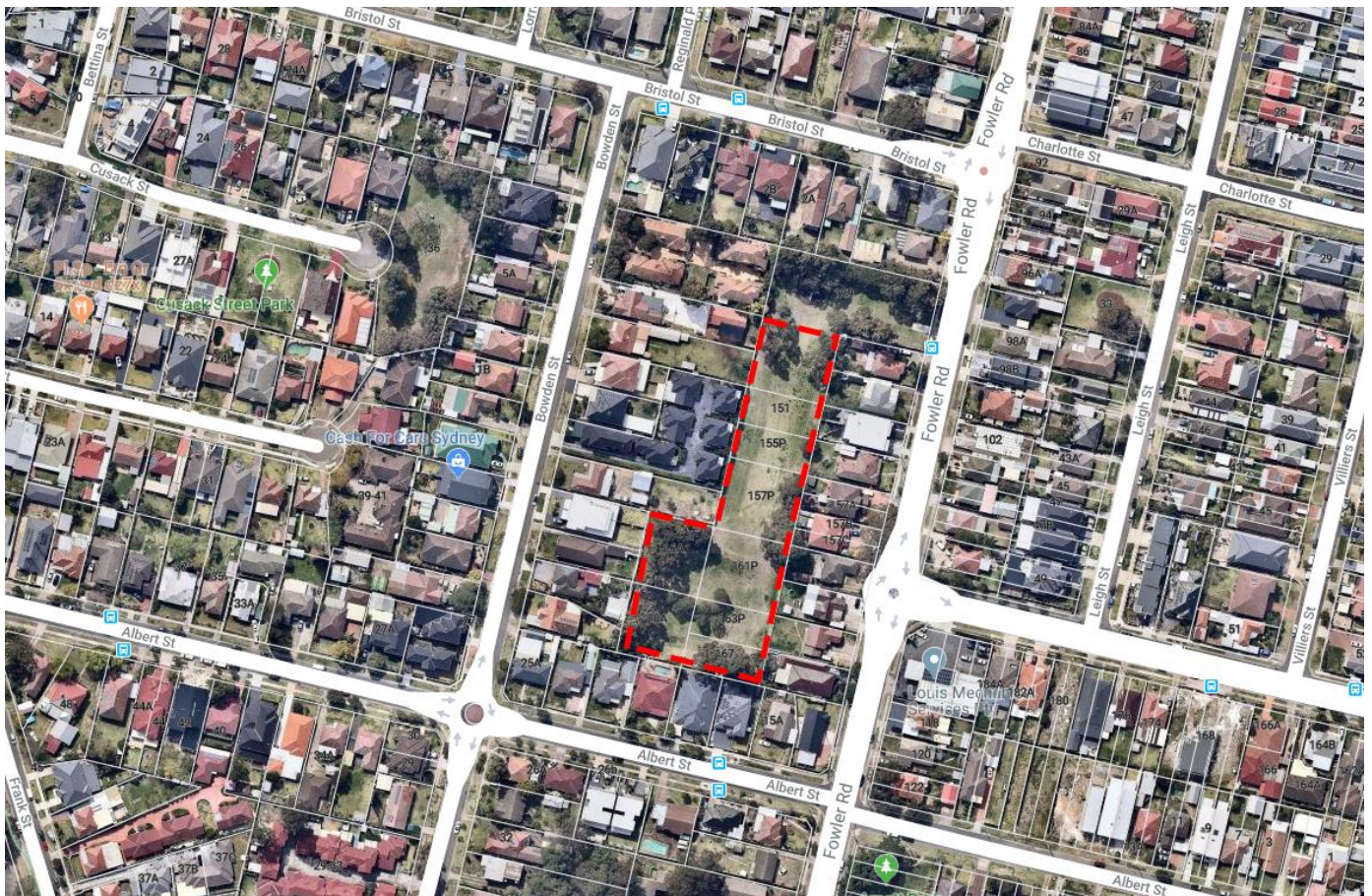
## Loftus Reserve, Merrylands

Site Suitability Criteria	Y/N	Comments
Appropriate size per Best Practice Standards	N	Narrow, linear space
Accessibility/entry to Site	Y	Good access from surround streets
Pedestrian/footpath connections	Y	
Adequate car parking	Y	Street parking available
Shelter/Shade	N	Limited
Seating and viewing areas	N	
Toilets	N	
Rubbish bin(s)	N	
Drinking fountain(s)	N	
Good natural surveillance	Y	Good surveillance, on main road
Proximity to housing/residential	Y	Close and bordering area



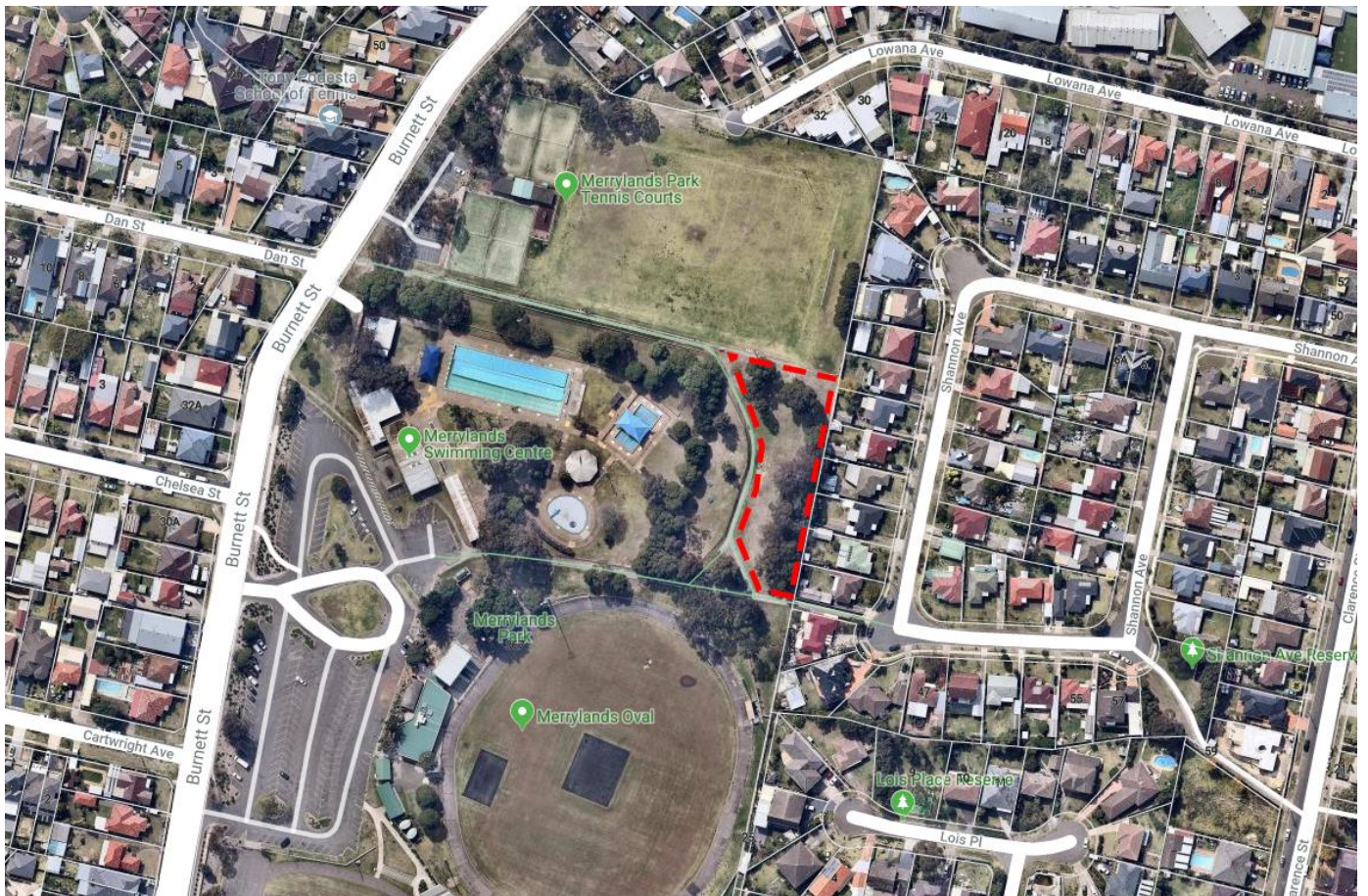
## Fowler Road Reserve, Merrylands

Site Suitability Criteria	Y/N	Comments
Appropriate size per Best Practice Standards	Y	
Accessibility/entry to Site	N	Limited access point
Pedestrian/footpath connections	N	
Adequate car parking	Y	Parking available on street access only
Shelter/Shade	Y	Some shade
Seating and viewing areas	N	
Toilets	N	
Rubbish bin(s)	N	
Drinking fountain(s)	N	
Good natural surveillance	N	Poor surveillance to the park
Proximity to housing/residential	Y	Housing directly borders site



## Merrylands Park, Merrylands

Site Suitability Criteria	Y/N	Comments
Appropriate size per Best Practice Standards	Y	Selected area (1700sqm)
Accessibility/entry to Site	Y	Rear to pool
Pedestrian/footpath connections	Y	Connections to other facilities, neighbourhood
Adequate car parking	Y	Parking available
Shelter/Shade	Y	Some shade
Seating and viewing areas	N	
Toilets	N	
Rubbish bin(s)	N	
Drinking fountain(s)	N	
Good natural surveillance	N	Poor surveillance to the area
Proximity to housing/residential	Y	Housing directly borders site



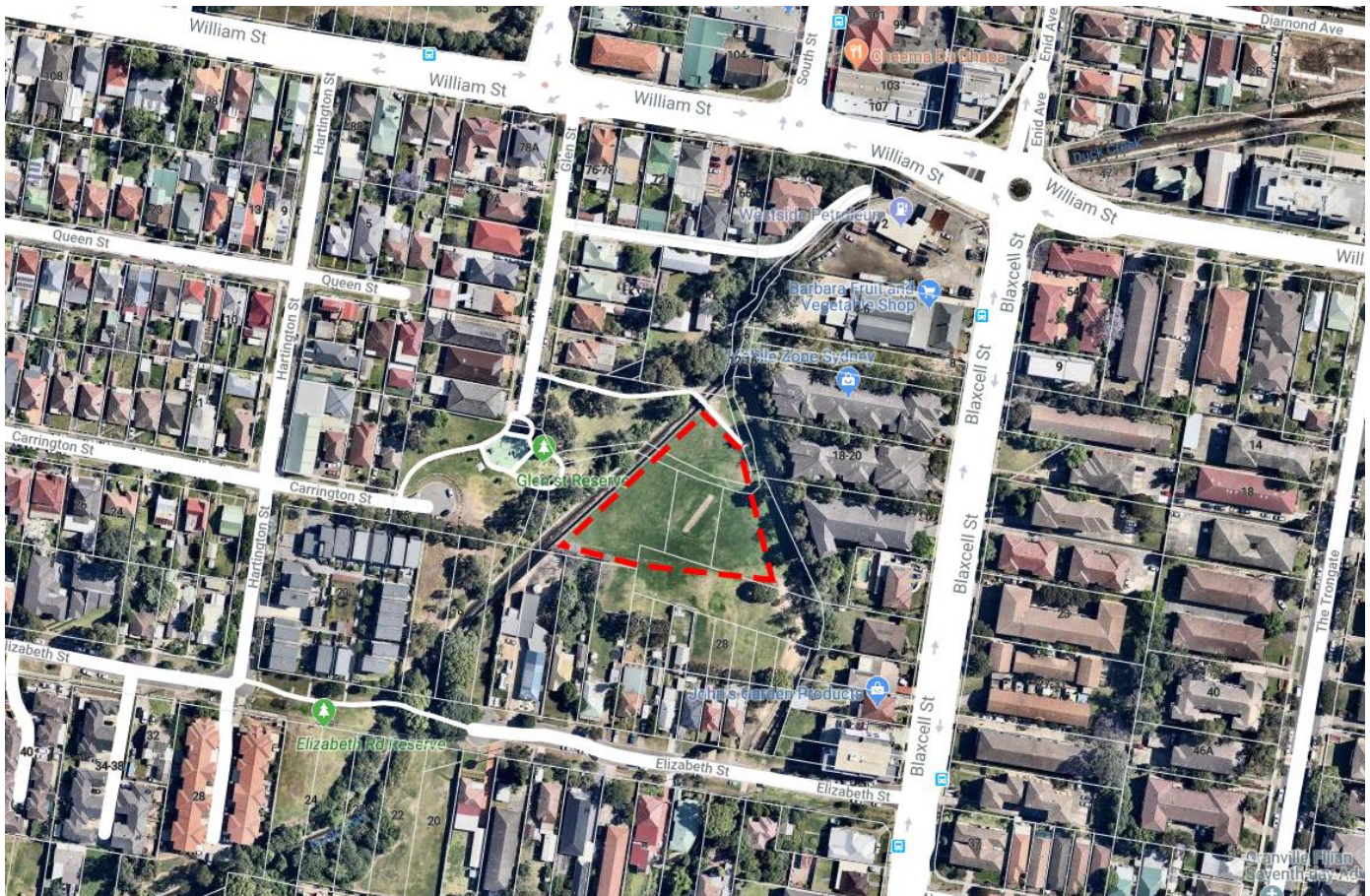
## Berwick Street Park, Guildford

Site Suitability Criteria	Y/N	Comments
Appropriate size per Best Practice Standards	N	Small size 560m <sup>2</sup>
Accessibility/entry to Site	Y	Existing entry points from Beaufort Street
Pedestrian/footpath connections	N	No footpaths on the street frontages
Adequate car parking	Y	Street parking available
Shelter/Shade	Y	Some shade
Seating and viewing areas	N	
Toilets	N	
Rubbish bin(s)	N	
Drinking fountain(s)	N	
Good natural surveillance	Y	
Proximity to housing/residential	Y	Directly bordering 2 properties



## Scout Memorial Park, Granville (Existing Dog Park)

Site Suitability Criteria	Y/N	Comments
Appropriate size per Best Practice Standards	Y	Open areas, good size
Accessibility/entry to Site	Y	Multiple access points from neighbourhoods
Pedestrian/footpath connections	Y	
Adequate car parking	Y	Limited Street parking available
Shelter/Shade	Y	Good shade
Seating and viewing areas	Y	
Toilets	N	
Rubbish bin(s)	N	
Drinking fountain(s)	N	
Good natural surveillance	Y	
Proximity to housing/residential	Y	Directly bordering in some areas



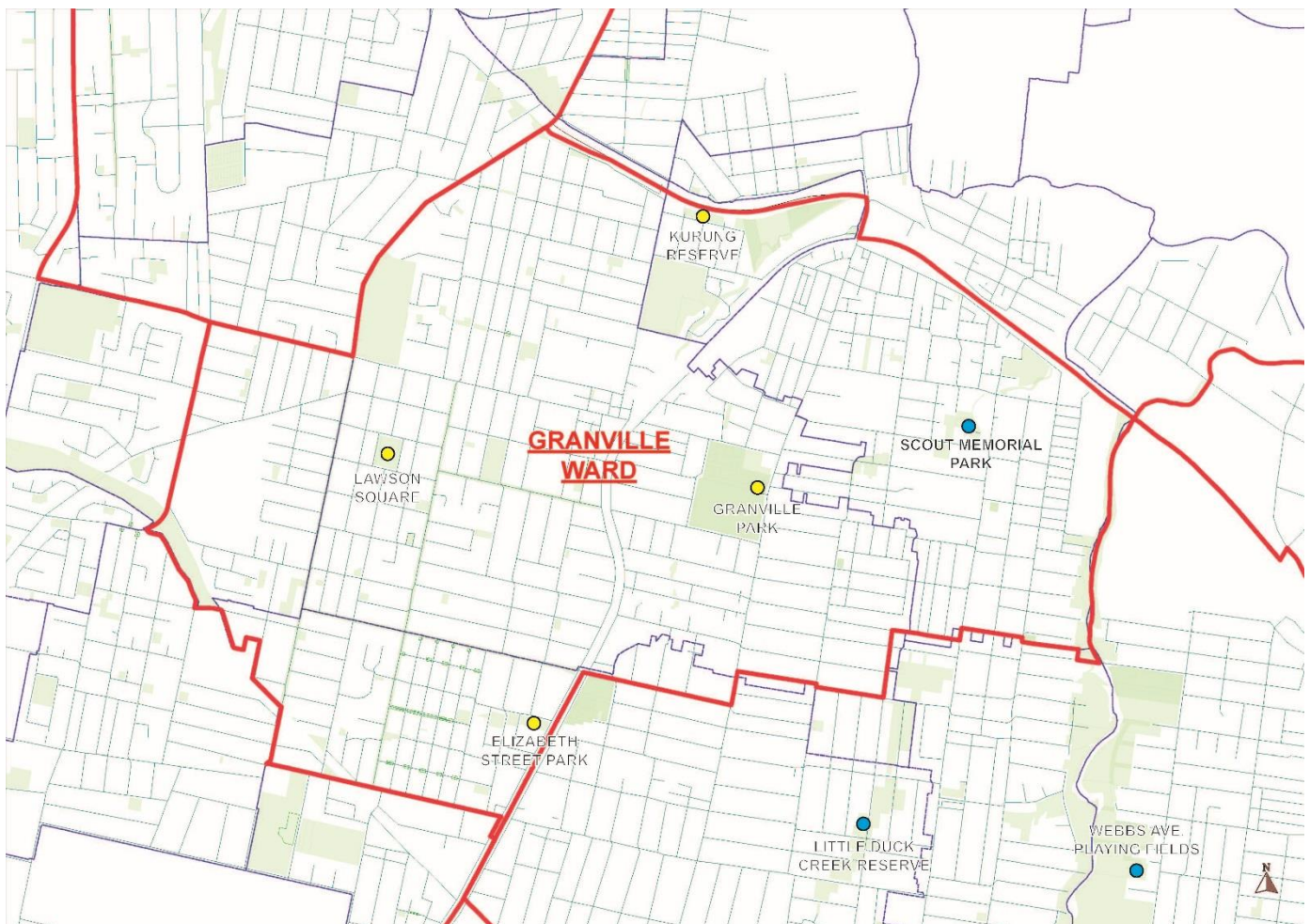
## Summary of Site Assessment

Following the review of sites within the Granville ward the following locations have been identified with the most potential

1. Kurung Reserve, Holroyd
2. Elizabeth Street Park, Guildford
3. Granville Park, Granville
4. Lawson Square, Merrylands

These locations offer the required space and minimise the potential negative impacts on surrounding residents and other park users. The proposed locations also consider the distribution of Dog Parks within the Granville Ward.

Map showing the distribution of preferred sites for Dog Parks within the Granville Ward.



### **Community Consultation.**

Community consultation on the proposed site would be recommend following a council resolution to assess the demand and community support for these facilities within the proposed locations. It would also give further insight into the demand for additional equipment such as dog agility items being included in the park.

## Cost estimates for proposed sites.

The associated costs to implement a dog park at the following locations is listed below.

Reserve/Park	Proposed area	Proposal	Cost Breakdown	Estimated Costs
Kurung Reserve, Holroyd	6,2000m <sup>2</sup>	Fencing of park, pruning of some trees to increase visibility into the park.	<ul style="list-style-type: none"> <li>• 475lm of Fencing @ \$100/lm= \$47,500</li> <li>• 1 x Access gate= \$1,500</li> <li>• Concrete Entrance Slab=\$2500</li> <li>• 1 x Waste bin and bag dispenser=\$2,500</li> <li>• 1 x regulatory sign=\$300</li> <li>• Site Establishment and preliminaries = \$5,000</li> <li>• Tree pruning = \$5,000</li> <li>• Demolition and dispose of old fence=\$5,000</li> </ul>	\$69,300
Elizabeth Street Reserve, Guildford	3,645m <sup>2</sup>	Fencing of park, pruning of some trees to increase visibility into the park.	<ul style="list-style-type: none"> <li>• 57lm of Fencing @ \$100/lm = \$5,700</li> <li>• 2 x Access gate= \$3,000</li> <li>• Concrete Entrance Slabs=\$7000</li> <li>• 2 x Waste bin and bag dispensers = \$5,000</li> <li>• 2 x regulatory signs=\$600</li> <li>• Site establishment and preliminaries = \$5000</li> <li>• Tree pruning = \$5,000</li> </ul>	\$31,300
Granville Park, Granville	1,750m <sup>2</sup>	Fencing of an underutilised portion of the park near Woodville Road.	<ul style="list-style-type: none"> <li>• 180 lm of fencing @ \$100/lm = \$18,000</li> <li>• 1 x Access gate= \$1,500</li> <li>• 1 x Waste bin and bag dispenser=\$2,500</li> <li>• Concrete entrance slab=\$5000</li> <li>• 1 x regulatory sign=\$300</li> <li>• 1 x drinking fountain with dog bubbler=\$3500</li> <li>• Site establishment and preliminaries = \$7,500</li> <li>• Plumbing and landscape costs = \$5000</li> </ul>	\$41,950
Lawson Square, Merrylands	2,350m <sup>2</sup>	Proposal to make a dog park in the shaded eastern side of park	<ul style="list-style-type: none"> <li>• 1 x Waste bin and bag dispenser=\$2,500</li> <li>• 1 x drinking fountain with dog bubbler= \$3,500</li> <li>• Plumbing cost \$2000</li> <li>• Concrete entrance slab=\$5000</li> <li>• 2 x regulatory signs=\$600</li> <li>• 180 lm of fencing @ \$100/lm = \$18,000</li> <li>• Site establishment and preliminaries = \$7500</li> <li>• Demolition and removal of existing fence= \$5000</li> </ul>	\$44,100
Scout Memorial Park, Granville (Existing area For embellishment)	7,520m <sup>2</sup>	Upgrade by providing waste bins, drinking fountain, and dog agility equipment.	<ul style="list-style-type: none"> <li>• 2 x Waste bin and bag dispensers = \$5,000</li> <li>• 1 x drinking fountain with dog bubbler=\$3500</li> <li>• Plumbing and installation = \$5000</li> <li>• Dog agility equipment=\$5,000</li> <li>• Shade tree planting=\$2,000</li> <li>• Site Establishment and preliminaries = \$5,000</li> </ul>	\$25,500