



## Masterplan & Documentation - Charles Mance Reserve - Merrylands

Presentation - Screen Panels Interpretive Concept & 50% DD  
14th February 2025





## Contents

1. Introduction
2. Listings
3. Site Location
4. Opportunities Plan
5. Views
6. Site Character and Materials
7. Concept Plan
8. Events Overlay Plan
9. 'Theatre of War' Screen - Elevation
10. Proposed Materials & Graphics
11. 'Theatre of War' Screen Panels - Interpretive Design Concept
12. Cenotaph Wall - Texture & Finish
13. Planting - Indicative species



Introduction

Cumberland City Council have engaged Phillips Marler to provide a Masterplan revision for the Centenary Memorial and its setting.

The first stage of the project includes the preparation of this Site Analysis with an Opportunities Plan.

This purpose of this report is to:

- Analyse the existing site and memorial settings to identify the key site features and context and opportunities that will influence the design for the memorial and setting.

Listings

The Park and its Memorials are not listed in Cumberland City Councils Local Environmental Plan 2021 but it is noted as significant in the NSW War Memorial Register.

Site Location


Charles Mance Reserve is located in Merrylands. Identification Details are:  
Street Address: 4-6 Newman Street, Merrylands, NSW 2160  
Lot 10B, DP 364655 & Lot 1, DP 200274

NSW War Memorial Register

MEMORIAL

Home / Memorials / Charles Mance Reserve

CHARLES MANCE RESERVE



DO YOU KNOW MORE ABOUT THIS WAR MEMORIAL?  
CLICK HERE TO LEARN HOW YOU CAN CONTRIBUTE

2 / 4

PREV

NEXT

DESCRIPTION / BACKGROUND

Memorial reserve with plaque commemorating its naming in honour of First World War veteran Charles Mance.

ADDRESS

6 Newman Street  
Merrylands NSW 2160

LOCAL GOVERNMENT AREA

Cumberland Council

SETTING

Garden/park

MEMORIAL TYPE

Garden/park

Veterans listed on this memorial

Sort by

Order

Items per page

APPLY

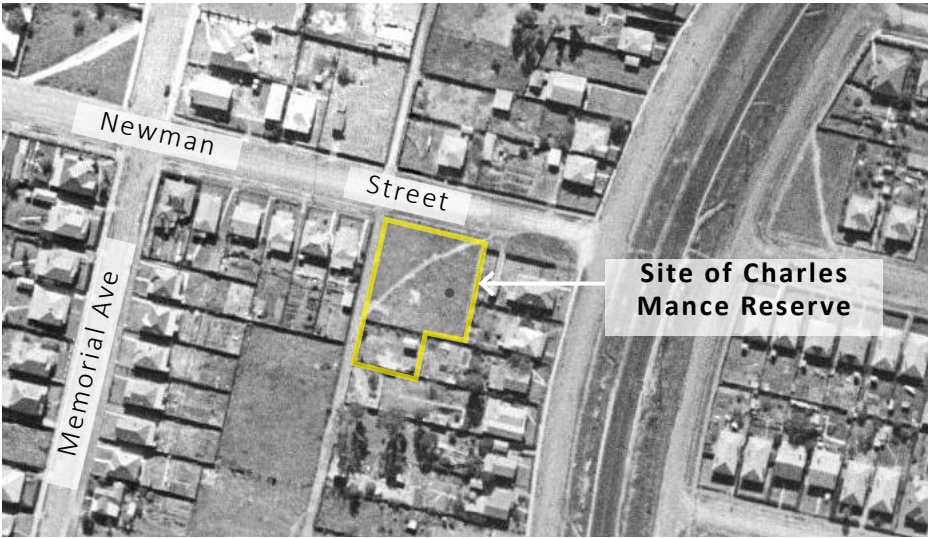
Family name

Asc

10



Aerial 2024 - Source: nearmap



Aerial 1943 - Source: Six Maps



### 1 & 2 MEMORIAL PRECINCTS

#### Memorial setting 1 - Flag poles and panels

- Opportunity to extend the existing paved area and integrate a cenotaph or an element suitable to lay wreath and provide space for the Catafalque party.
- Enhance setting by providing a permanent screening element to the residences with 'Theatres of War' theme. Consider enhancement of existing panels or replacement with a continuous screen element at a height that minimises the blocking effect

#### Memorial Precinct 2-

- The garden bed setting contains a range of individual elements, the Centenary memorial wall at Newman St, which holds the original naming plaque of the Reserve amongst others, the 1915 Two Soldiers statue, the plaque for George Cartwright as well as the plinth dedicated to Gunner Wilbert 'Darky' Thomas Hudson MM.
- The setting offers opportunity to add further memorial plinth in alignment with the 'sun ray' paving strips in the adjacent path, baring in mind not to clutter the area.

#### General-

- Consider visual relation of memorials to the rest of the park as well as visibility from the surrounding streets in particular in connection with memorial events.
- Detailed concept should consider Anzac Day event overlays and allow for adequate space for attendees whilst providing a general seating space throughout the year.

### BOUNDARIES & VIEWS

#### Northern

- Mostly open and accessible boundary front to Newman Street with good views into park, lower level partially obstructed by memorial wall.

#### Eastern & South-Eastern

- Inaccessible boundary with solid fence towards residences.
- Residences provide visually unpleasing backdrop but add level of surveillance to this area of the park.

#### Southern & South Western

- Limited surveillance in the south-western park pocket due to solid boundary fence and blocking effect of memorial panels - encourages anti-social behaviour.

#### Western - Continuous planting bed provides limited access points.

- Filtered views in and out of the site from path but little passive surveillance from adjacent residences due to blocking canopies.

### 3 - PATHWAYS & ENTRIES

- Main concrete path with granite paver strips to reflect 'sun rays' largely following the historic diagonal path alignment as visible in the 1943 aerial.
- Some paving strip inserts are inconsistent with the radial ray concept/layout- consider removal to strengthen the idea.
- The diagonal path and the path running along the western boundary provide good connections to Byron Park but there is no link to the flag pole memorial setting. Consider a new accessible connection.

### PLANTING

- A mix of mature Eucalyptus trees and natives with some flowering exotics gives year round interest and provide shade.
- Tree planting is unbalanced throughout park - consider new tree planting along the south-eastern boundary for screening and shade.
- Consider increased use of native plants for improved ecological conditions.
- Reconsider appropriateness of clipping of shrubs and use of hedging, retain in specific areas only.
- Consider softer, more natural look for enhanced aesthetic and reduced maintenance for extended and enhanced planting areas - similar to planting bed along Newman Street.
- The garden bed in turf the area and adjacent the memorial setting have a visual and physical blocking effect- reconsider location and size.

### SERVICES

**Sewer (4)** - Consider easement (zone of influence) of existing sewer main for proposed works to avoid conflict. Sewer alignment and depth should be confirmed prior to commencement of new works.

**Electricity** - Consider capacity of existing switchboard to cater for events and additional feature lighting of extended memorial.



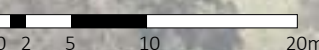
### SITE GEOGRAPHY & FLOOD

- There is a subtle rise in the land from Newman Street entry towards Byron Park on the south-western corner of the park.
- Maintain existing falls whilst avoiding increased flow to neighbouring residences. Consider ag-line drainage to mitigate impacts of new hardstands.
- The park lies within a flooding area. Consider robustness of materials and avoid obstruction of flow path.

### LEGEND

- Existing entry points (v)vehicular
- Pedestrian links
- Solid boundaries
- Permeable boundary - visually
- Relevant Internal view connections
- Views to / from the site
- View points

Scale 1:500 at A3







View A - View South- east from across Newman Street over park



View B - Looking north towards Newman Street and Merrylands Library over park from south-western park pocket - Blocking effect of panels at Memorial setting 1 apparent





View C - From diagonal path looking south towards Memorial 1 setting and view connection to Byron Park - stark contrast in quality between the south eastern and south-western boundary with clear view of residences versus backdrop of trees in the south-western park pocket



View D - Looking north-east from western boundary over park with Merrylands Library in the background

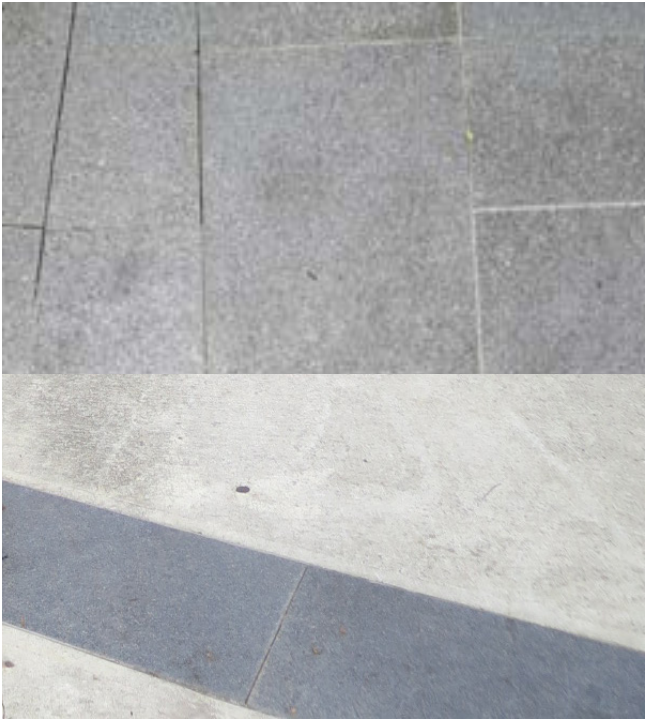


View E - View from eastern entry off Newman Street towards south-west





CHARACTER - Existing memorial setting 1- Flagpoles and panels



CHARACTER - Existing paving

**Key notes:**

- A wide range of materials is used for the existing memorials with some being repeated in a different combination within each memorial, however, the effect is somehow busy
- A dominant graphic is the use of cut-out shapes / silhouettes and the existing sun ray pattern in the path
- Opportunity to adopt some of the existing materials and graphic ideas rather than introducing new elements to enhance unity of the memorial settings
- If considering a new material, the material should be complementary in texture and tone to the retained existing elements and suited to express the existing graphic ideas to blend into the setting whilst offering a range of opportunities to include interpretation



CHARACTER - Existing Memorial setting 2







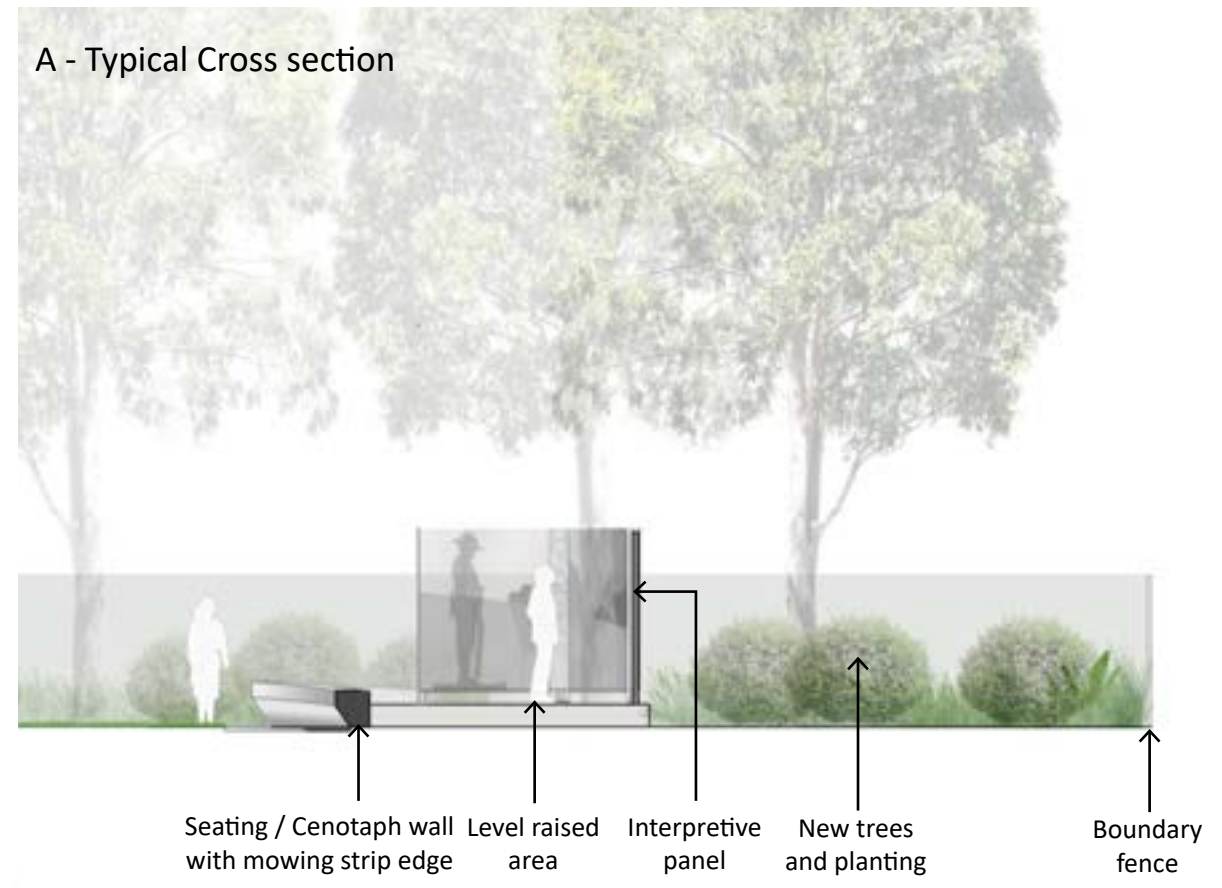




## Events Overlay Plan

Opportunities & Masterplan - Charles Mance Reserve, Merrylands





Flattened Elevation - New 'Theatre of War' screen panels and Cenotaph wall

Scale 1:100 at A3

## Elevation

Opportunities & Masterplan - Charles Mance Reserve, Merrylands



Screen panels -  
Perforated metal



Cenotaph / Seating Wall -  
Precast coloured concrete / stone



Graphic inspirations



Surface materials - Coloured concrete / granite pavers

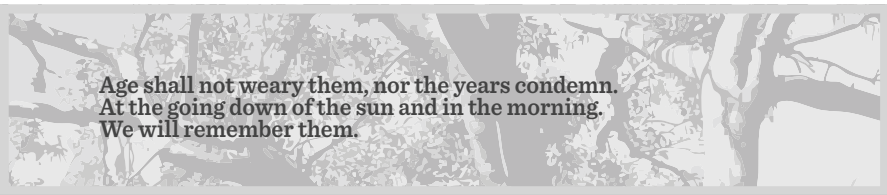




CHARLES MANCE RESERVE  
INTERPRETIVE SCREEN CONCEPTS



Front Elevation



Possible Rear Elevation 01

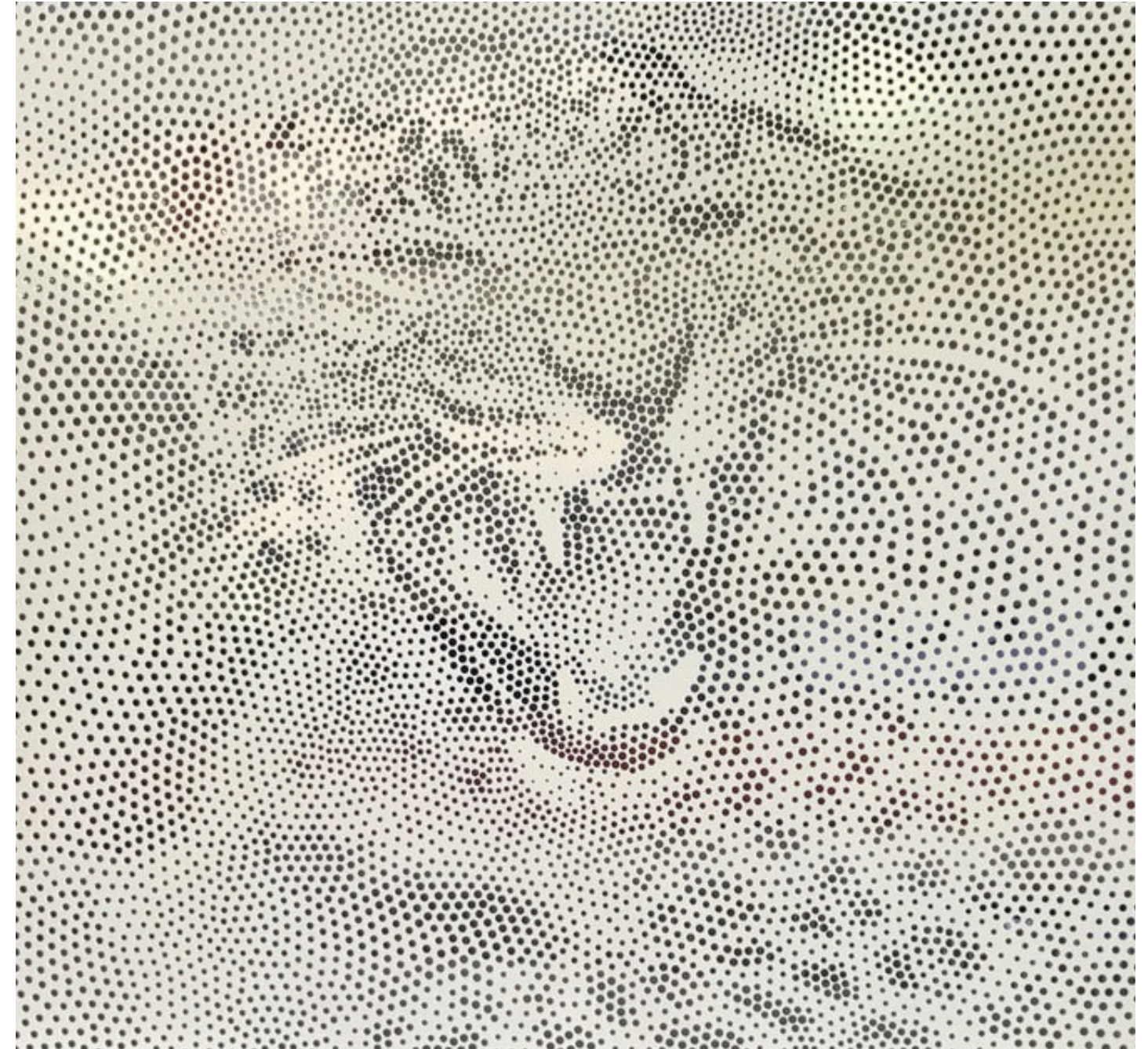


Possible Rear Elevation 02









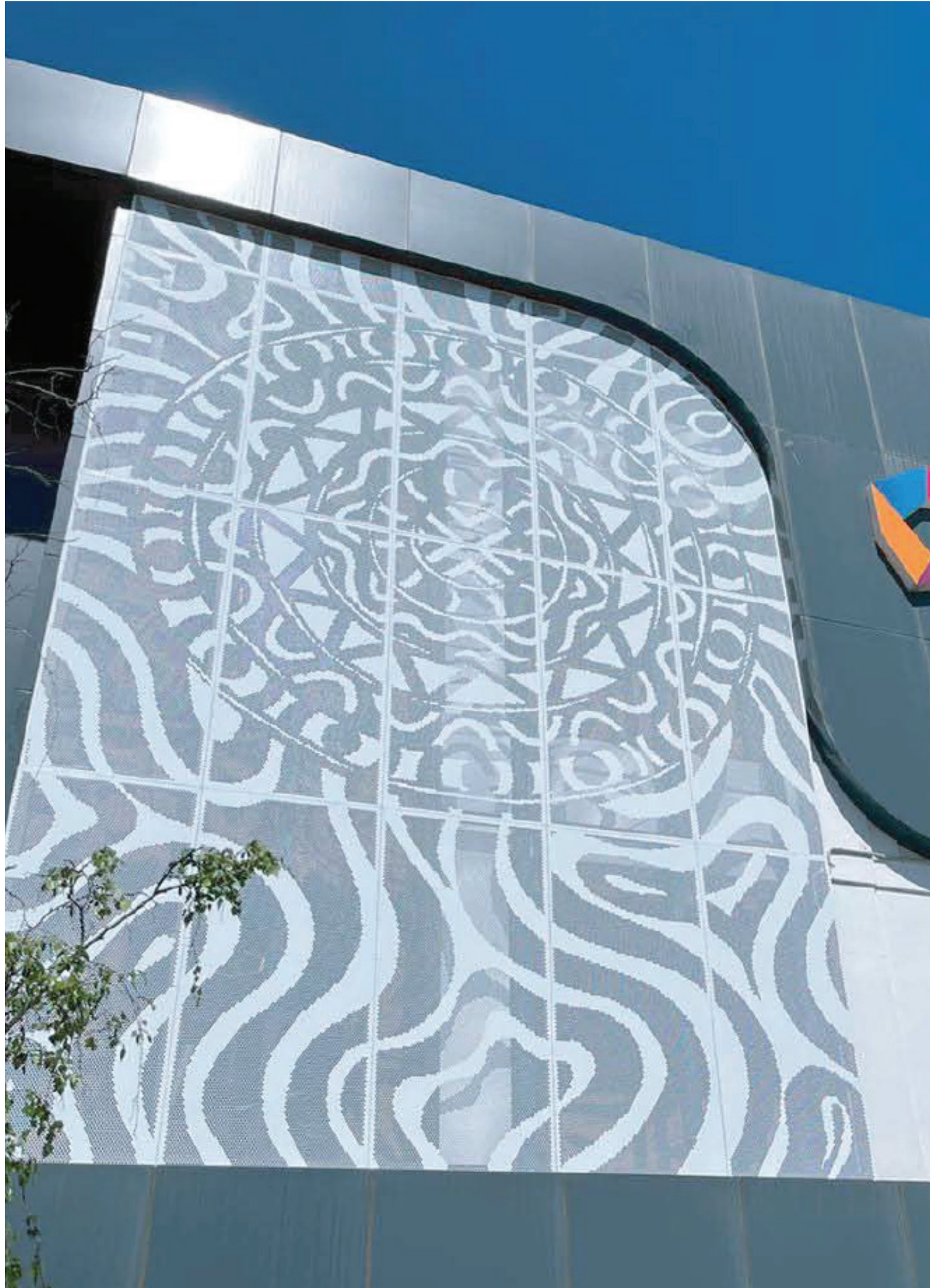
















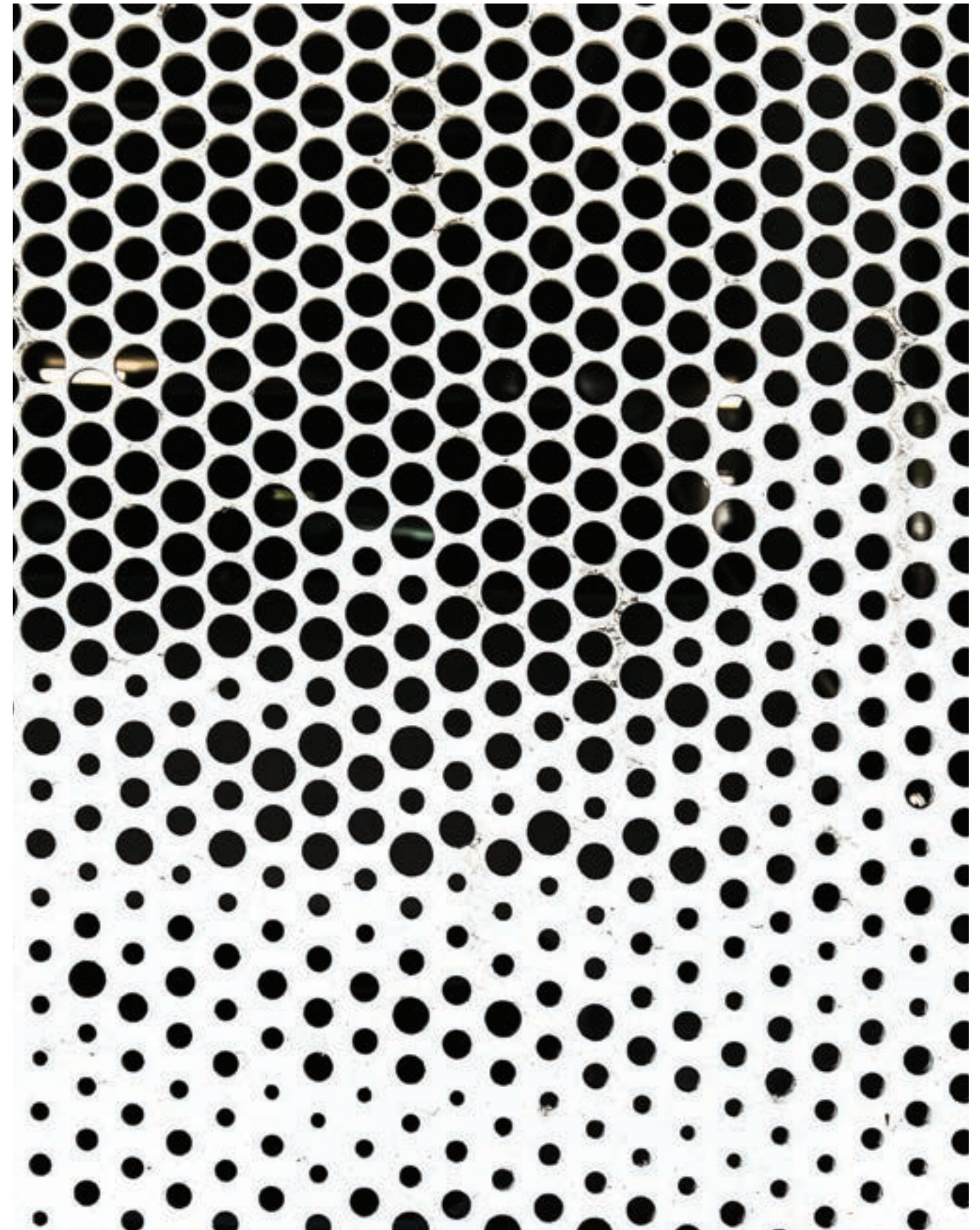












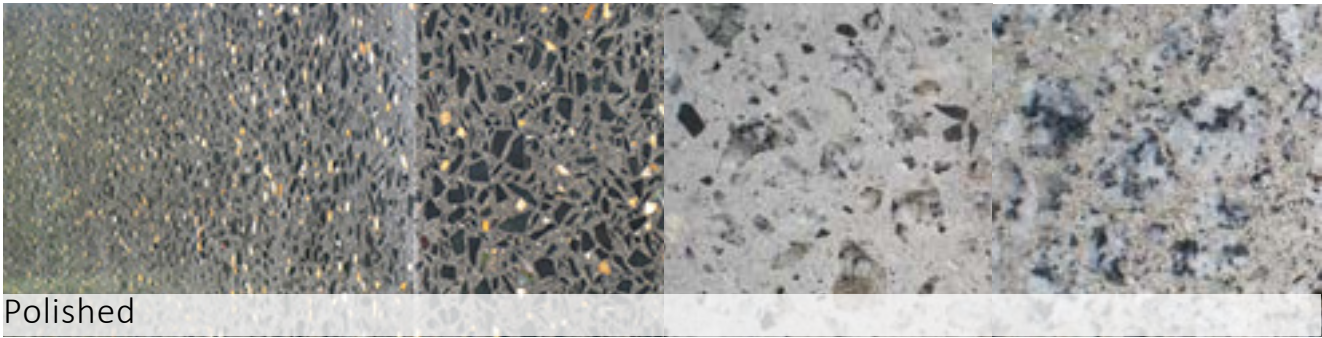








Off-form class 1- recessed lettering



Polished



Acid etched

Wall top edge - polished finish or off-form class 1

Top of wall - polished or honed finish with acid etched



Chamfered sides - honed or off-form class 1



Honed



Off-form class 1



Trees - Feature tree options- Eastern boundary - larger height



Eucalyptus leucoxylon 'Rosea' -  
Red flowering Yellow Gum



Angophora floribunda -  
Rough barked Apple



Brachychiton acerifolius  
Illawarra Flame Tree



Alloxylon flammeum  
Tree Waratah

Screen tree options - Southern boundary - small to medium height



Elaeocarpus eumundi -  
Smooth leaved Quandong



Elaeocarpus reticulatus -  
Blueberry Ash



Lagerstroemia 'Natchez' -  
Crepe Myrtle

Shrub and groundcover planting:



Callistemon citrinus 'White Anzac'  
White Bottlebrush



Leptospermum 'Pink Cascade' or 'Lipstick'  
Tea tree



Correa glabra x decumbens 'Dinner Bells' -  
Native Fuchsia



Austromyrtus dulcis



Doryanthes excelsa  
Gyme Lily



Lomandra longifolia  
'Katrinus Deluxe'



Lomandra fluvitilis 'Shara'



Dianella longifolia



Themeda australis  
'Mingo'



Pycnosorus globosus -  
Billy Buttons



Scaevola aemula ssp  
Fan Flower



Tripladenia cunninghamii-  
Bush Lily



Rosemary officinalis  
prostrate- Trailing Rosemary