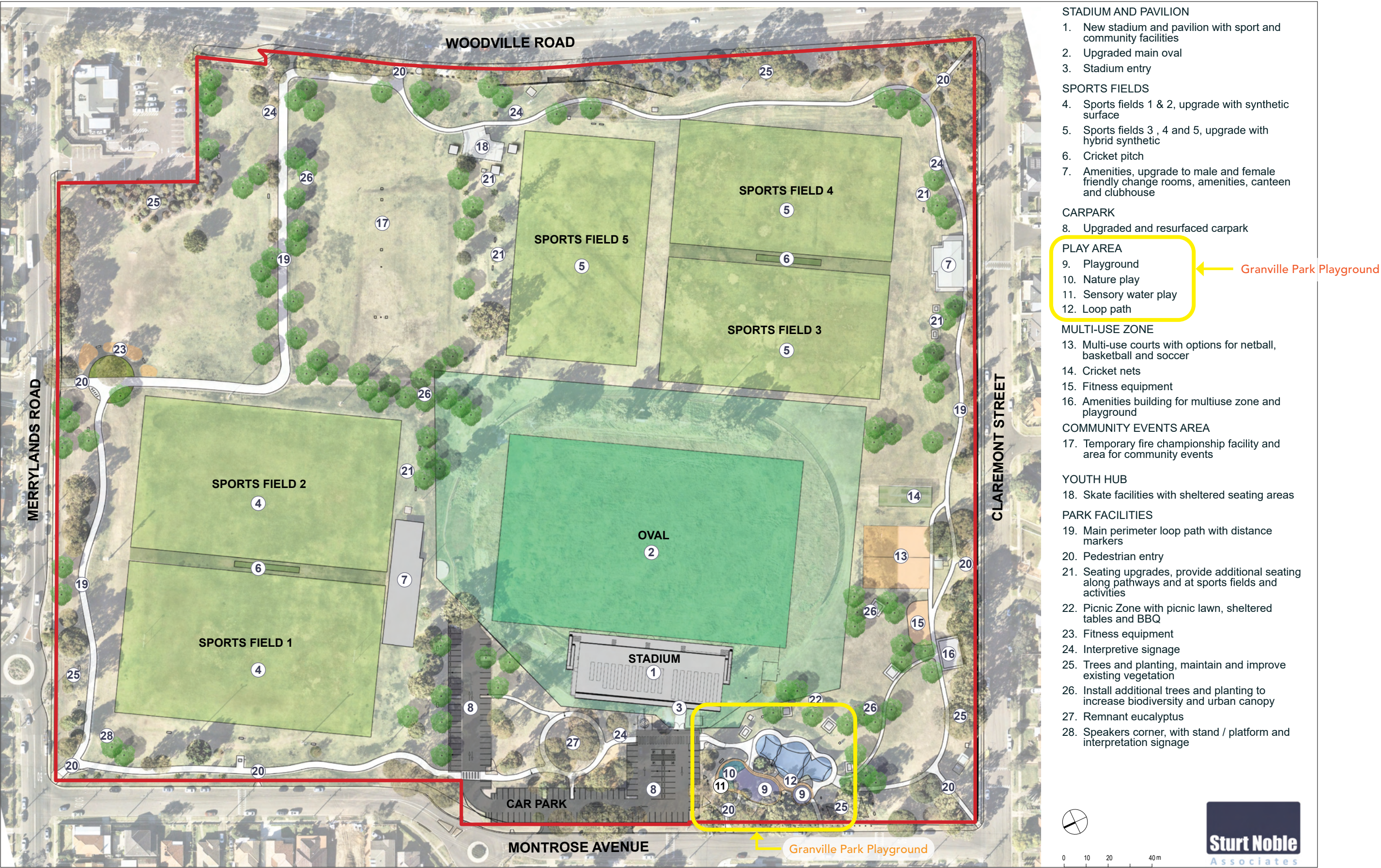


# 1.1 DESIGN FRAMEWORK



Adopted Granville Park Landscape Masterplan. July 2023



# 2.1 LANDSCAPE CONCEPT PLAN



## KEY ITEMS

### Existing Features

1. Car park and kerbs retained
2. Foot paths and entry points retained
3. Security fence and log fence retained
4. Turf area retained and rectified
5. Shelter and seating to be improved
6. Sensory play area retained

### Proposed Surface Treatment

7. Proposed shared path: 2.5m wide
8. Proposed foot path: 1.2m wide
9. Proposed stairs and ramp access to comply with AS2381
10. Proposed coloured concrete surface with feature bands and textures
11. Proposed play mulch softfall surface
12. Proposed rubber softfall surface
13. Proposed permeable hard surface

### Proposed Furniture and Fixtures

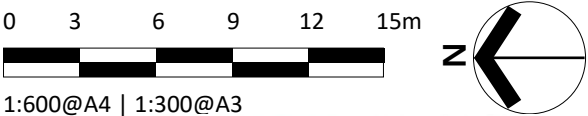
14. BBQ and picnic table and seats
15. Park seats and shelter
16. Fixed umbrellas and table and seats
17. Shade sail structure
18. Security gate and fence: 1.2m high

### Proposed Play Opportunities

19. Scooter track with painted artwork
20. Play tower
21. All-age play equipment
22. Nature and adventure play area
23. Wheelchair user friendly and innovative water play area
24. Steppers and informal nature play setting
25. Sensory and instrumental play items
26. Mound with rubber softfall surface, integrated garden bed, embankment climbing and sliding play opportunities
27. Swing set under existing tree canopies
28. Liberty swing with fencing

### Proposed Amenities

29. Proposed amenities building and plant room
30. Outdoor pool showers

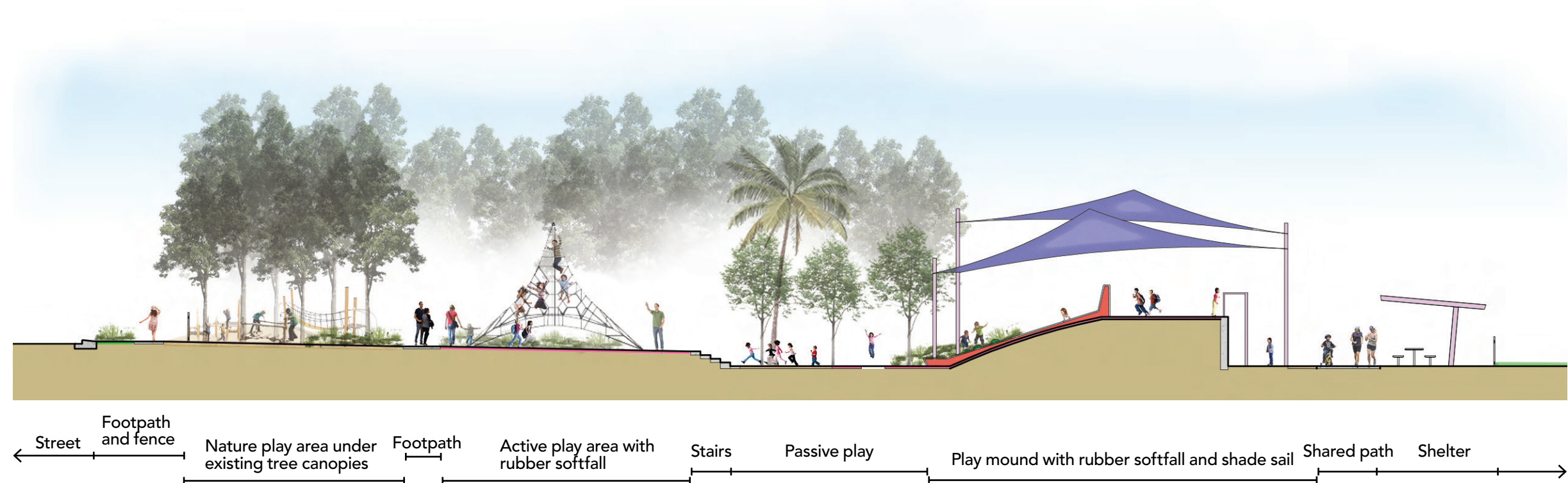


1:600@A4 | 1:300@A3

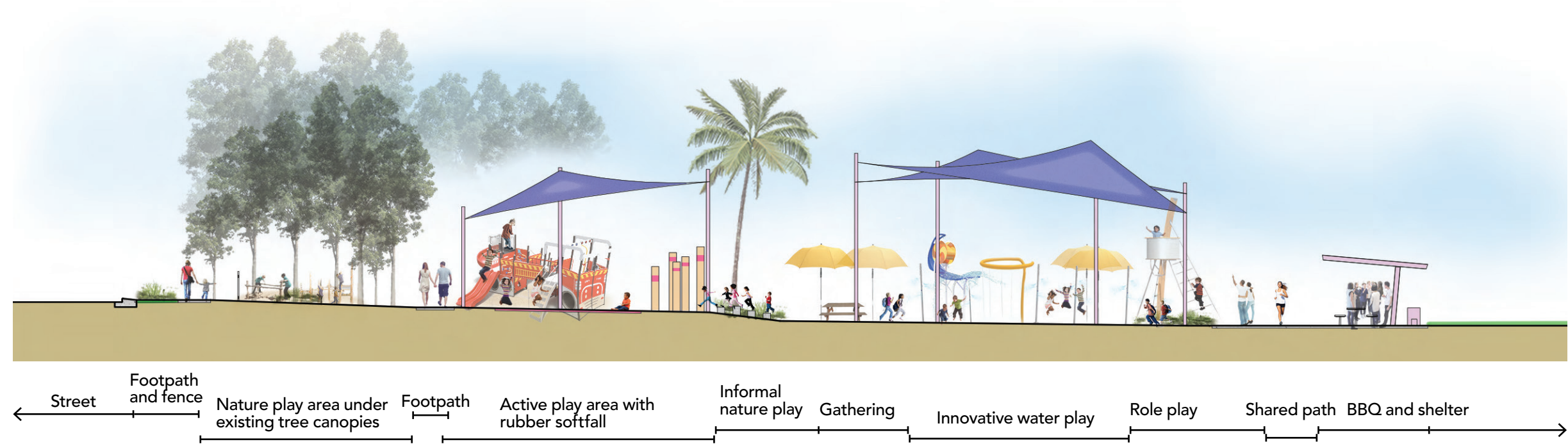


# 2.2 SECTIONS

SECTION A 1:5000@A3

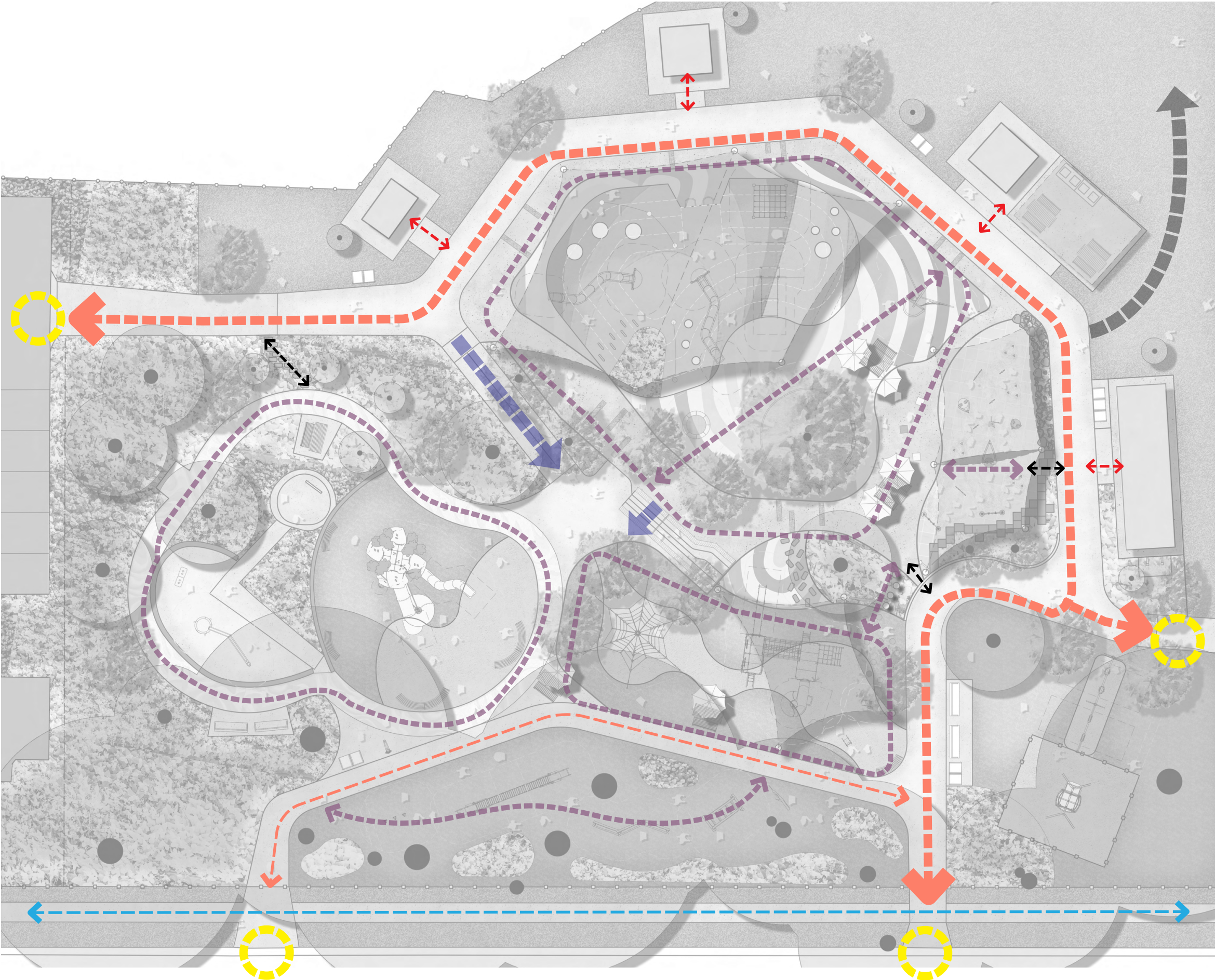


SECTION B 1:5000@A3





# 2.3 CIRCULATION AND ACCESSIBILITY



**KEY**

Primary Circulation

- Site entrance
- Park perimeter footpath
- Playground shared path
- Playground pedestrian path
- Future connection to western part of the park

Secondary Circulation

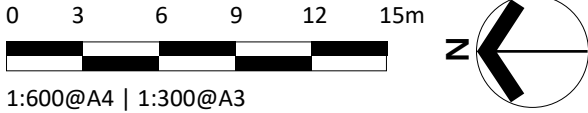
- Loop path around play area
- Interconnecting path within play area

Tertiary Circulation

- Paved footpath to amenities
- Informal access pathways

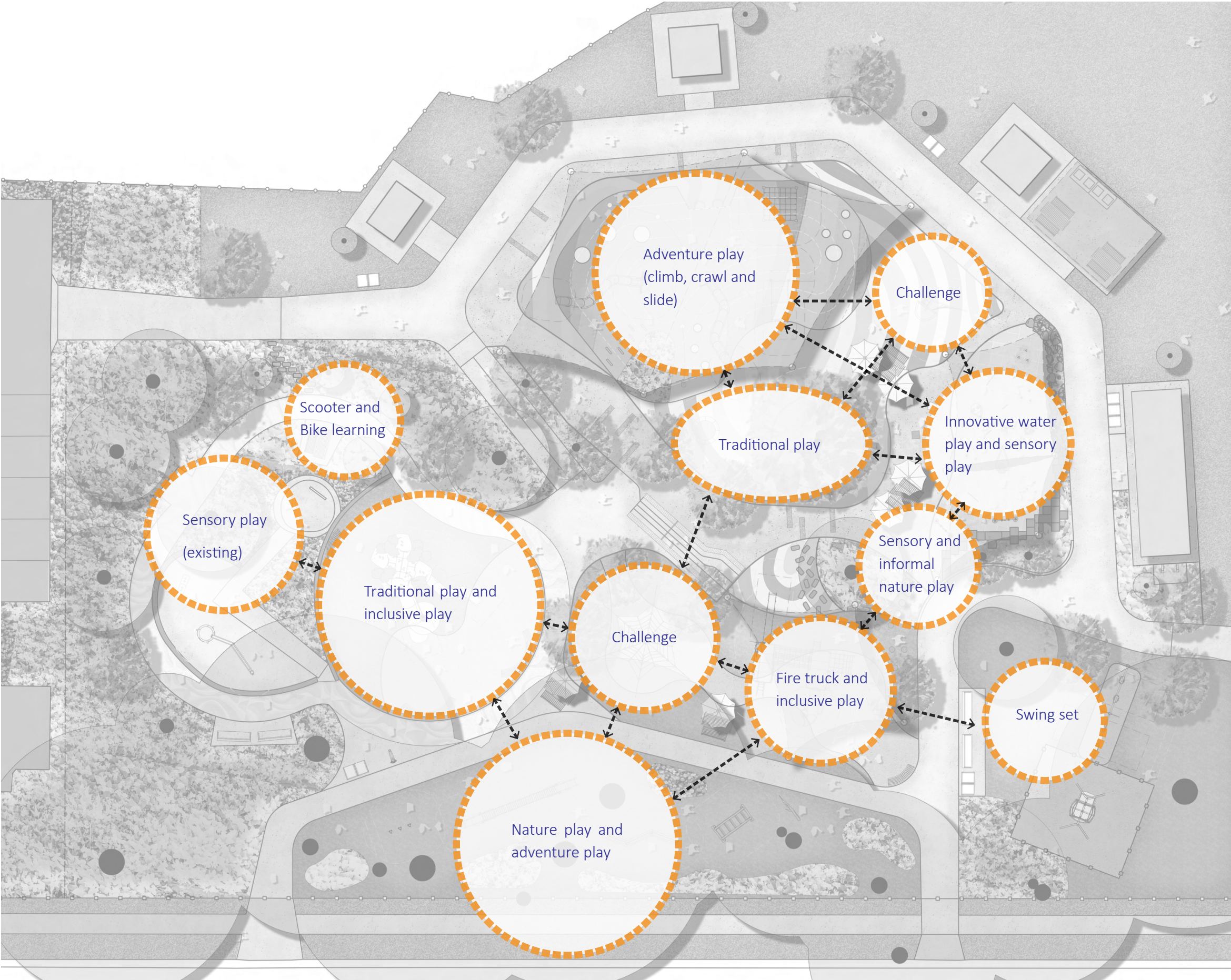
Access Circulation

- Accessible ramp and stairways





# 2.4 PLAY TYPOLOGY



The proposed play typology for the park embraces a diverse range of elements to cater to a wide spectrum of play preferences.

It encompasses traditional play equipment like rockers, slides, swings and trampolines for familiarity.

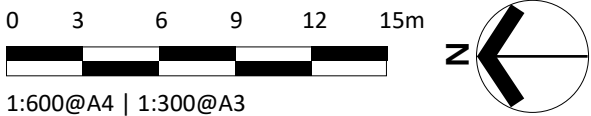
Adventure play areas offer embankment climbing, sliding items, fireman’s poles, climbing walls, and a watch tower to encourage problem-solving.

Nature play zones foster environmental connection, while water play (including mist poles and light sprays), a scooter track highlighted with painted artworks, and a firetruck-themed multiplay unit engage various age groups.

Sensory and musical instruments enhance creativity and inclusiveness.

Informal natural play elements such as strategically placed recycled tree logs, sandstone rocks and carved animals offer unique encounters throughout the park.

This comprehensive approach ensures not only play diversity but also interconnectivity among various play elements, enhancing the overall park experience.





# 2.6.1 DETAIL PLANS



Existing Water Play Precinct

## KEY

- |  |   |
|--|---|
| 1. Existing water play and sensory play items retained | 12. Concrete pavement that complies with the Council's standard |
| 2. Existing park furniture retained                    | 13. Picnic table and seats with fixed umbrellas                 |
| 3. Existing garden beds to be improved                 | 14. Drinking fountain and bin enclosures                        |
| 4. Existing stone edge retained                        |   |
| 5. Proposed rubber softfall                            |   |
| 6. Proposed mulch softfall                             |   |
| 7. Proposed play tower                                 |   |
| 8. Proposed scooter track with painted artwork         |   |
| 9. Proposed park furniture                             |   |
| 10. Proposed stepping stones/informal path             |   |
| 11. Proposed compliant ramp access                     |   |



Scooter track



Painted artwork



Informal access



Play tower



Existing water play



Parental supervision



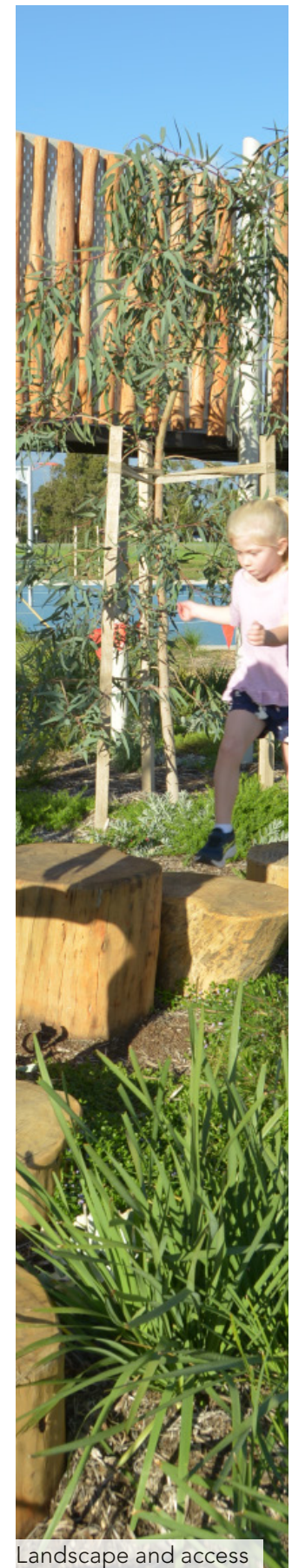
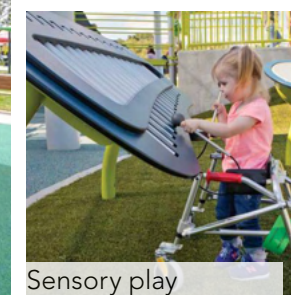
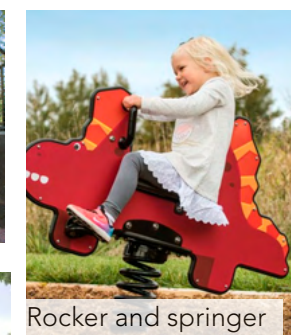
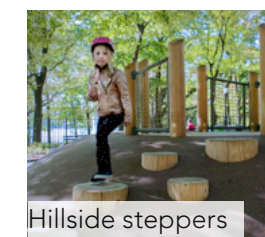
## 2.6.2 DETAIL PLANS



## All-age Play Precinct

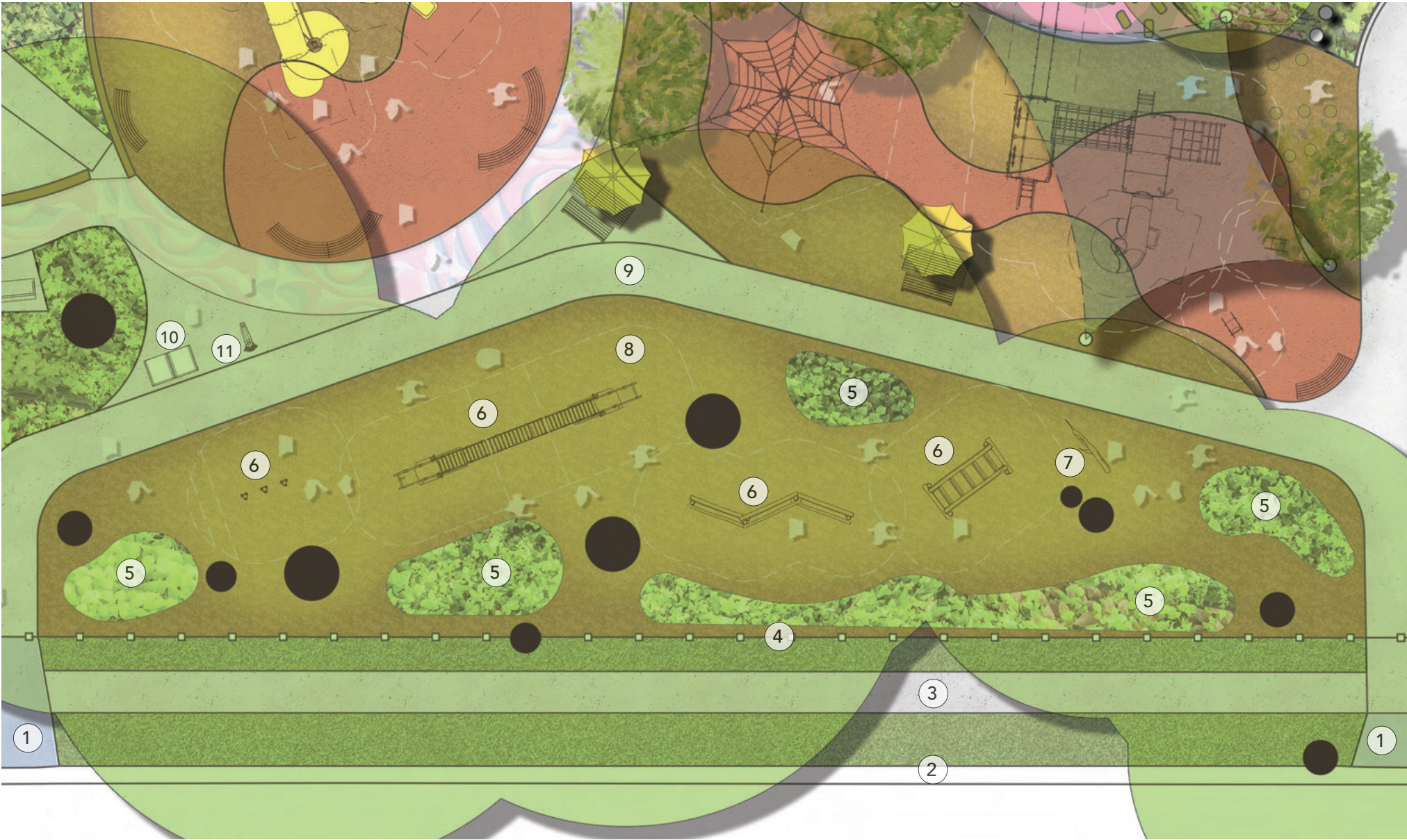
## KEY

1. Proposed shared path:2.5m wide
2. Proposed foot path:1.2m wide
3. Proposed stairs access with handrails and integrated seating opportunities
4. Proposed rubber softfall
5. Proposed mulch softfall
6. Proposed mass planted beds with native groundcovers and shrubs
7. Proposed shade sail structure overhead
8. Proposed pyramid climbing net equipment
9. Proposed fire truck play unit and rockers
10. Proposed embankment steppers and infill plants
11. Proposed timber logs maze with painted and carved patterns
12. Proposed music instruments and sensory play items
13. Proposed park furniture and hard surface
14. Proposed picnic table and seats and featured umbrella shades
15. Coloured concrete pavement with featured bands and markers
16. Bin enclosures





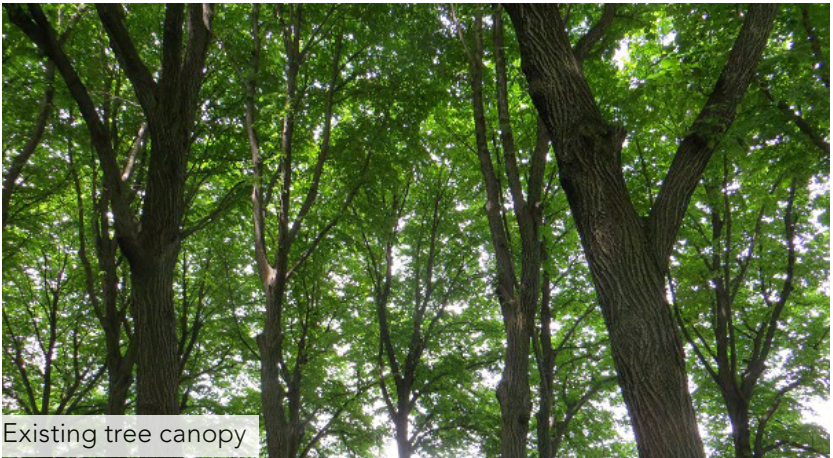
# 2.6.3 DETAIL PLANS



## Nature Play Precinct

### KEY

- |  |  |
|--|--|
| 1. Existing concrete pavement retained                                     | 10. Relocated bins and proposed bin enclosures |
| 2. Existing road kerb retained   | 11. Proposed drinking fountain                 |
| 3. Proposed concrete loop path to the park's perimeter                     |  |
| 4. Proposed security palisade gate and fence:1.2m high                     |  |
| 5. Proposed infill plants within play areas                                |  |
| 6. Proposed nature play items  |  |
| 7. Proposed recycled natural elements, e.g tree logs, sandstone rocks etc. |  |
| 8. Proposed mulch softfall   |  |
| 9. Proposed concrete foot path:1.2m wide                                   |  |



Existing tree canopy



Nature play opportunity



Interpretative signage



Carved timber sculpture



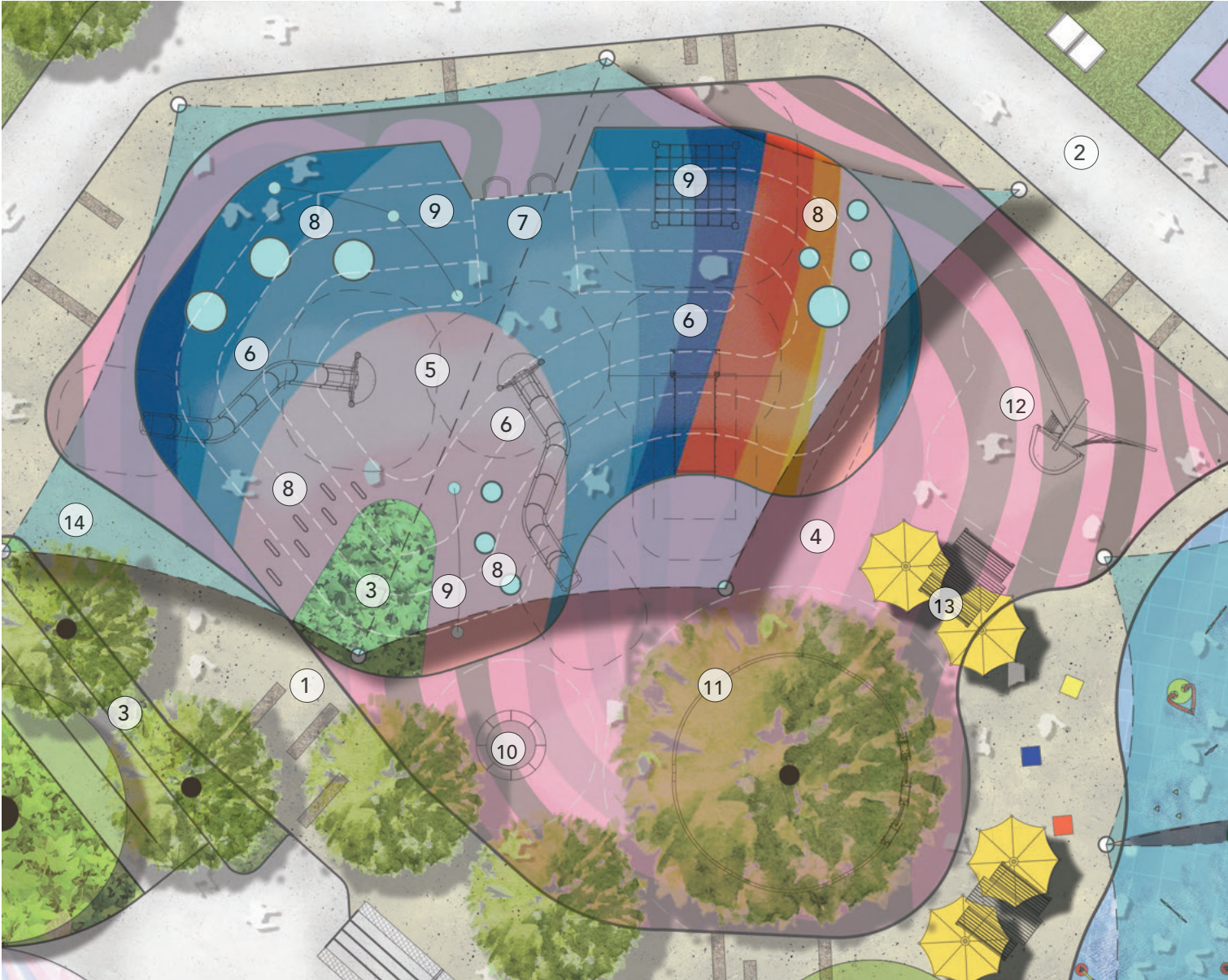
Pole carvings



Nature play opportunity



# 2.6.4 DETAIL PLANS



Central Play Precinct

## KEY

- |   |   |
|---|---|
| 1. Coloured concrete pavement with featured bands and markers | 11. Ludic cableway play equipment for toddlers and older children |
| 2. Proposed shared path:2.5m wide                             | 12. Watch tower play structure                                    |
| 3. Proposed garden bed with native and feature plants         | 13. Picnic table and seats with featured umbrellas                |
| 4. Proposed rubber softfall on grade                          | 14. Shade sails   |
| 5. Proposed rubber softfall to the mound                      |   |
| 6. Embankment slides and wide inclusive slide                 |   |
| 7. Fireman’s pole and wall climbing opportunity               |   |
| 8. Rubber spheres and stepping access                         |   |
| 9. Climbing ropes and nets                                    |   |
| 10. Tampoline   |   |



Hill mounds



Creative rubber softfall surface



Climbing and challenge



Picnic with shade



Watch tower



Tampoline



Shade sails



Accessible Carousel



# 2.6.5 DETAIL PLANS



Splash pad and water play elements



Sandstone boulder and garden



Floor musical instrument



Xylophone



Spinner



Drum



Swing set



Permeable Softfall