



CUMBERLAND
CITY COUNCIL

Community Information Session

NSW Government's Transport Oriented Development Program
at Berala and Lidcombe

27 February 2024



House Rules and Etiquette for Attendees

We ask that you:



Please be respectful to everyone in the meeting. Conflict and hostility will not be tolerated and this may result in being removed from the session.



Cameras and recording devices are not permitted in this session due to the sensitive nature of the matter. Failure to comply may result in you being removed from the session.



There will be an opportunity for you to ask any questions at the end of the presentation. This part of the session will be guided by Council officers.



Agenda

1

Council Presentation

2

Question and Answer Session

3

Close



CUMBERLAND
CITY COUNCIL

Council Presentation



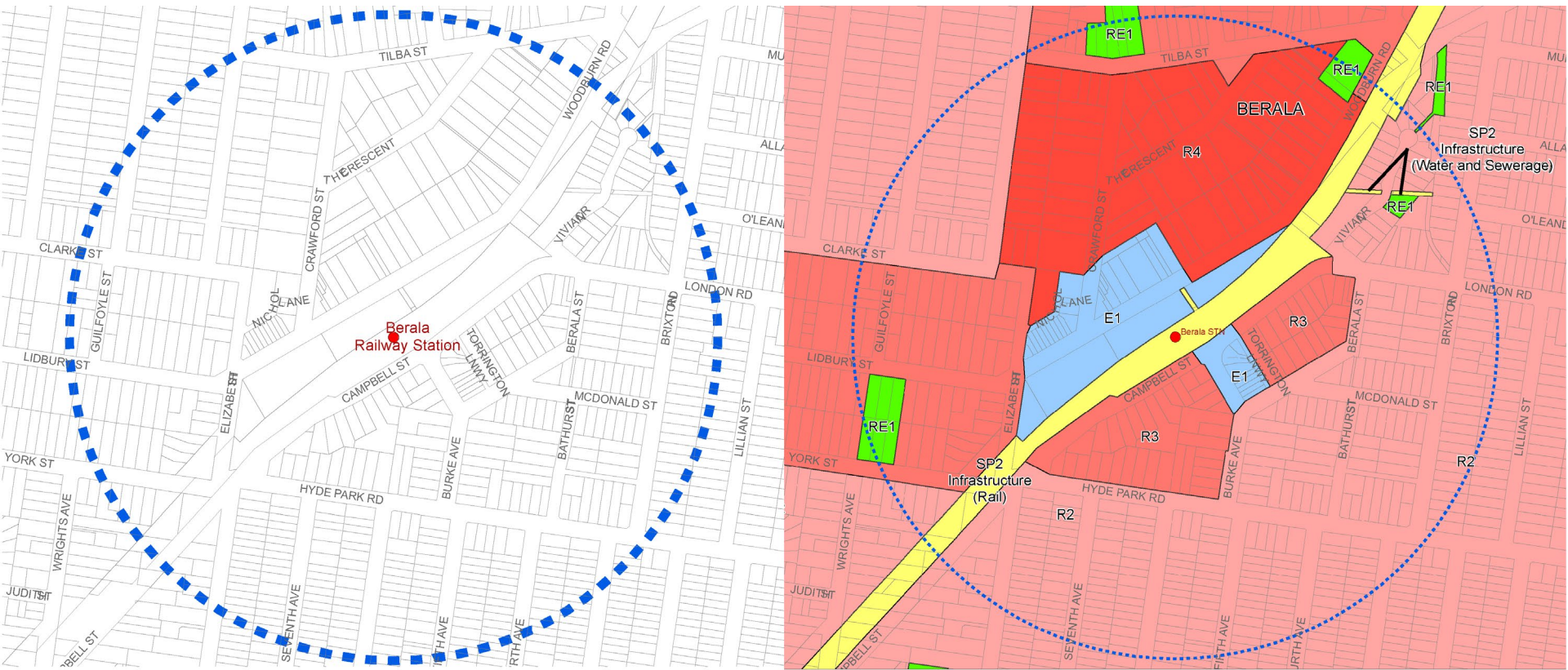
Background

- The NSW Government's Transport Oriented Development Program seeks to increase housing by allowing development up to 6 storeys to be located within 400m of selected train stations in areas currently zoned for low and medium density development.
- Berala and Lidcombe have been identified as locations for the NSW Government's Transport Oriented Development Program.



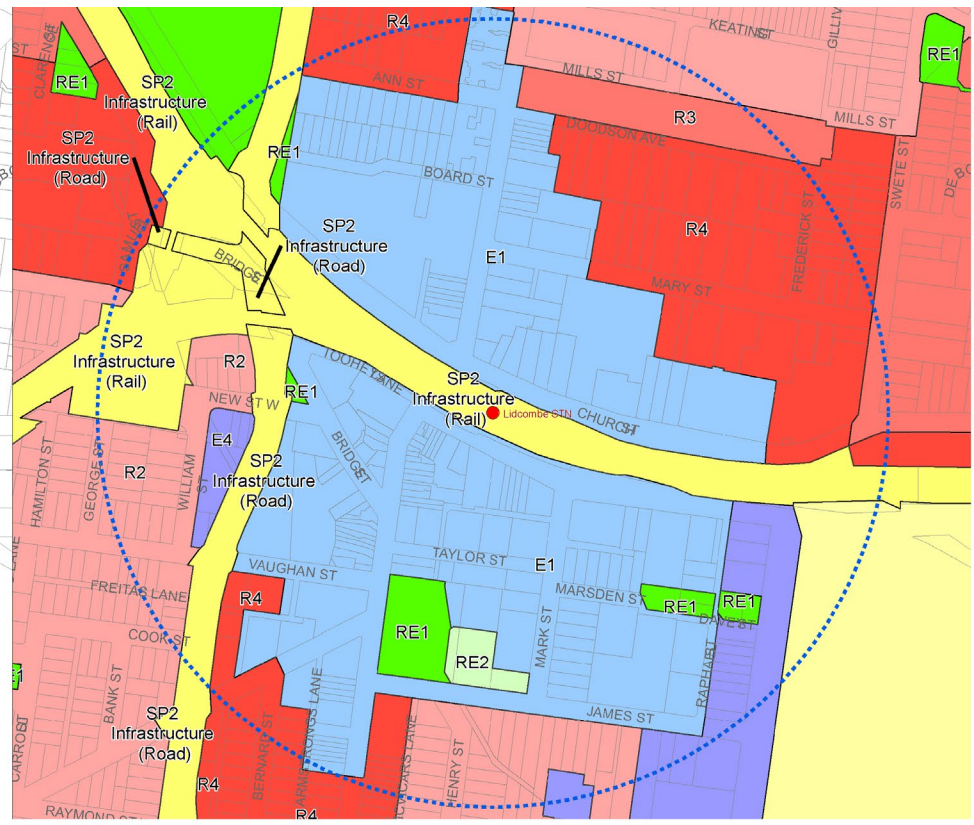
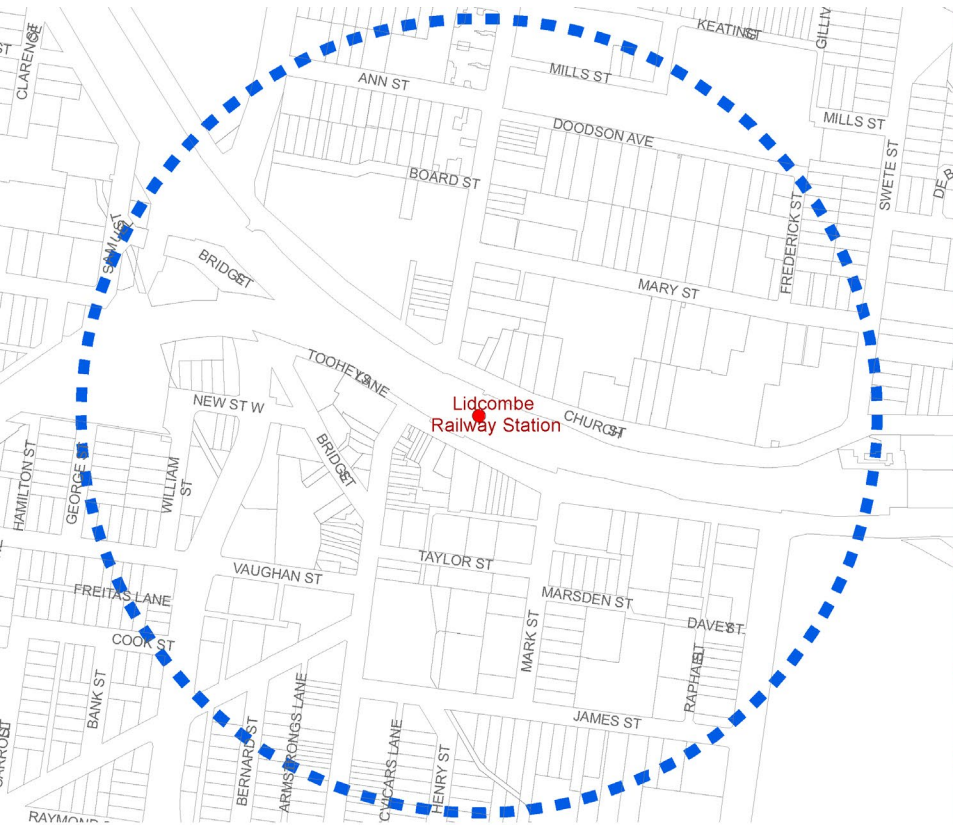


Berala – 400m Radius from Train Station





Lidcombe – 400m Radius from Train Station





Proposed Planning Controls

- The NSW Government's Transport Oriented Development Program is proposed to be implemented through a State Environmental Planning Policy (SEPP).
- The SEPP would override local planning controls in the Cumberland Local Environmental Plan (LEP).
- The Cumberland Development Control Plan (DCP) would continue to apply, except in areas where the SEPP overrides the DCP.





Next Steps

- 1 Feedback from community received during information sessions
- 2 Report to Council in March 2024
- 3 Submission by Council to the NSW Government on the Transport Oriented Development Program



CUMBERLAND
CITY COUNCIL

Question and Answer Session