

STAGE 1 VIEW LOOKING SOUTH



STAGE 2 SECTION & 3D VIEW

- ① 3m buffer zones to future developments.
- ② Bench seating and planting beneath deciduous tree.
- ③ 9m wide pedestrian path.
- ④ Paved Ephemeral 'Dry river bed'.
- ⑤ Bench seating with fixed table and stool set.
- ⑥ Planting blister with tree planting and misting systems.
- ⑦ Main paving course - light earth tones for ease of maintenance and urban heat reduction.
- ⑧ Pavement banding.
- ⑨ Stage 2 canopy concept design - by architects.



KEY PLAN



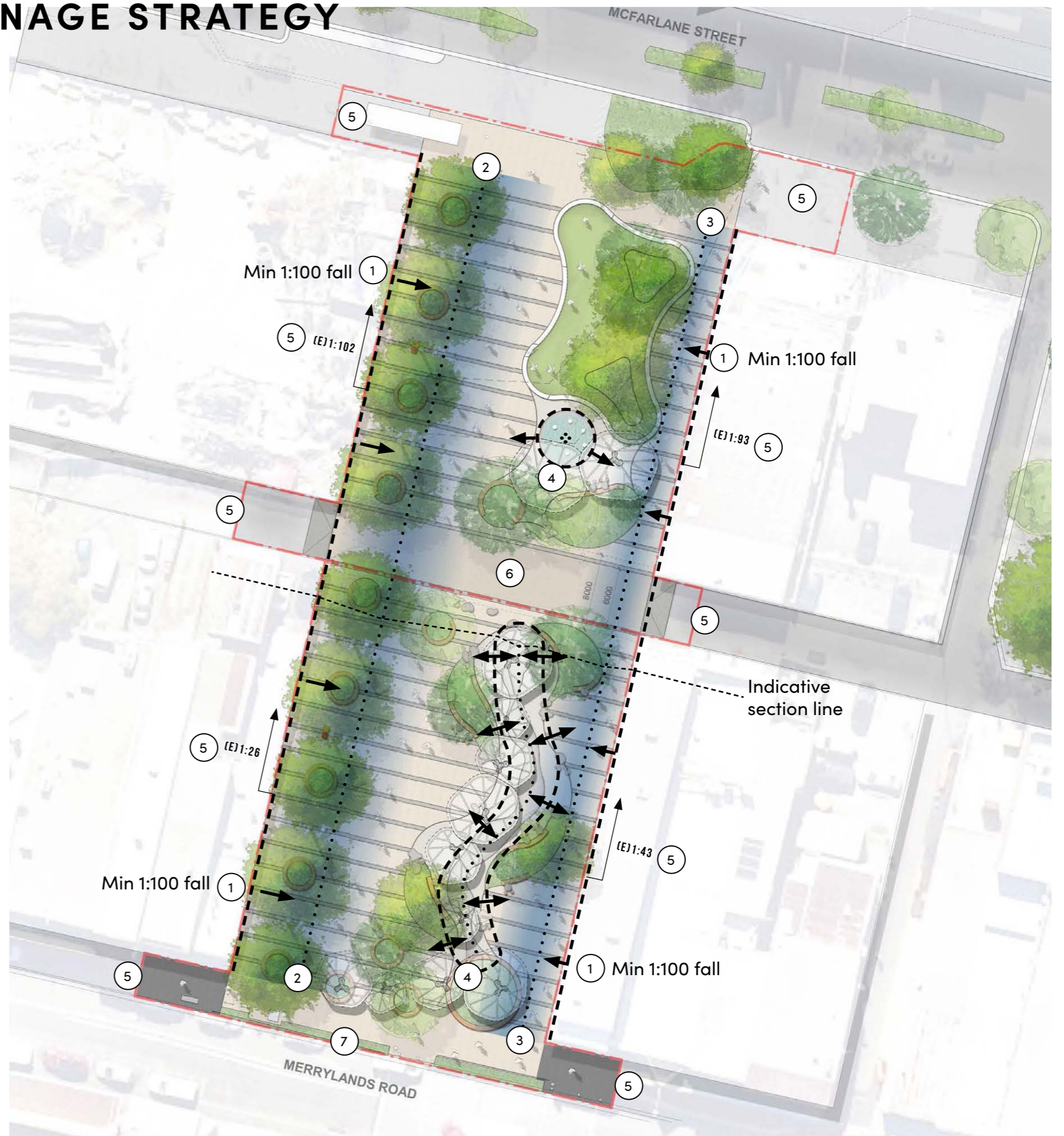
STAGE 2 VIEW LOOKING NORTH TOWARD MAIN LANE



LANDSCAPE LEVELS AND DRAINAGE STRATEGY

- ① Min. 1:100 fall away from building into drainage lines.
- ② Low point for drainage line immediately east of tree line.
- ③ Low point for drainage line along eastern edge of the Square.
- ④ High points around water features to prevent the water features acting as a drainage for the site.
- ⑤ Existing grading of site.
- ⑥ Main Lane flush with Square levels.
- ⑦ Existing paving levels raise to meet top of kerb level.

- High point
- Low drainage point
- ➔ Fall direction



PUBLIC ART INTEGRATION OPPORTUNITIES

① Raised concrete edge along lawn



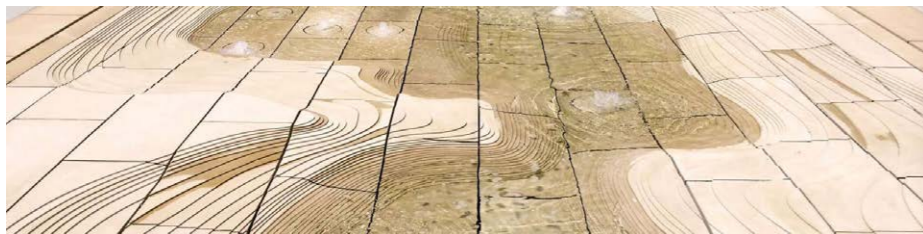
② Pavement banding



③ Canopy structure



④ Dry creek bed course






⑤ Boulder elements

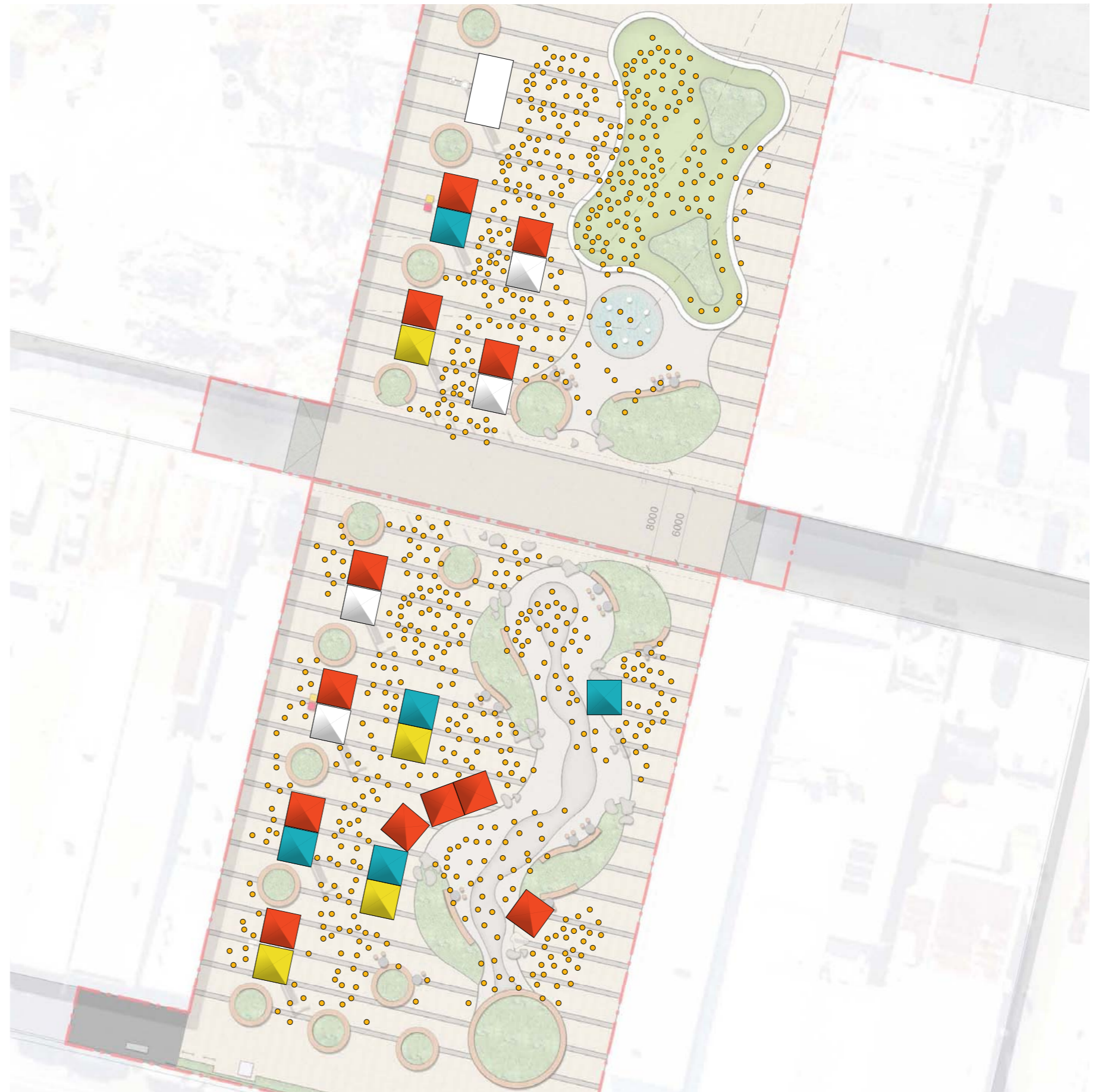


⑥ Site Hoarding

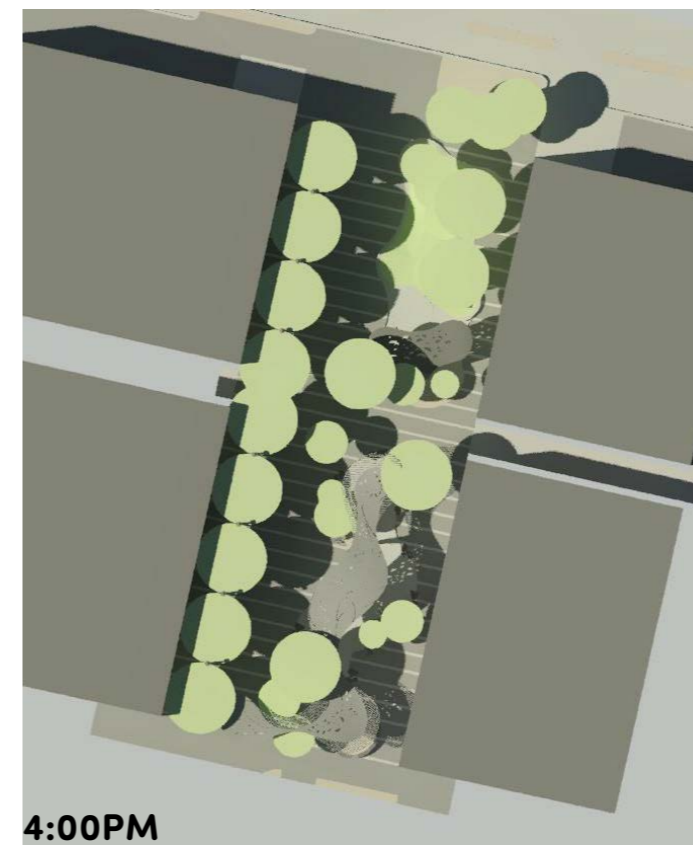
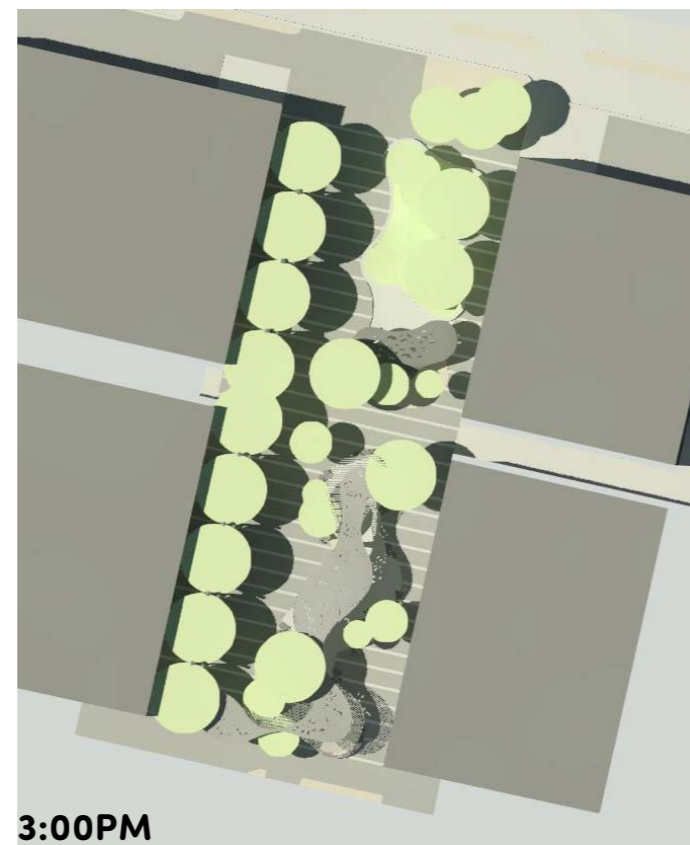
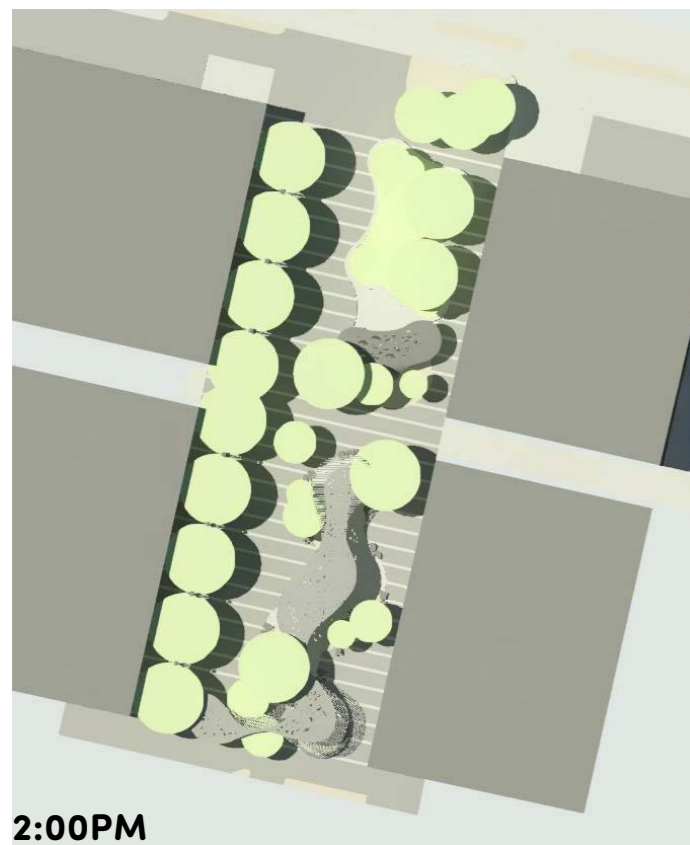
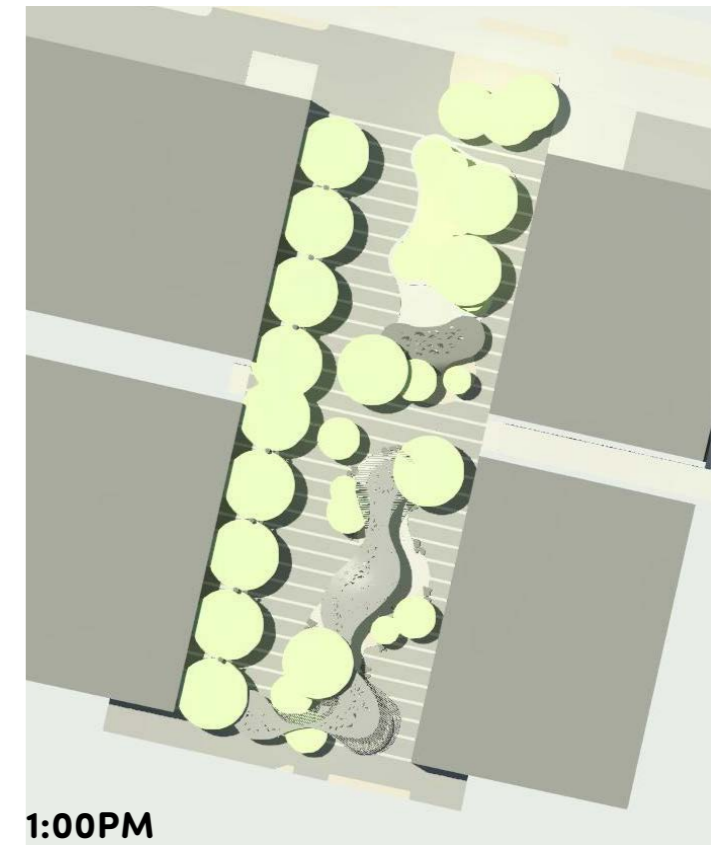
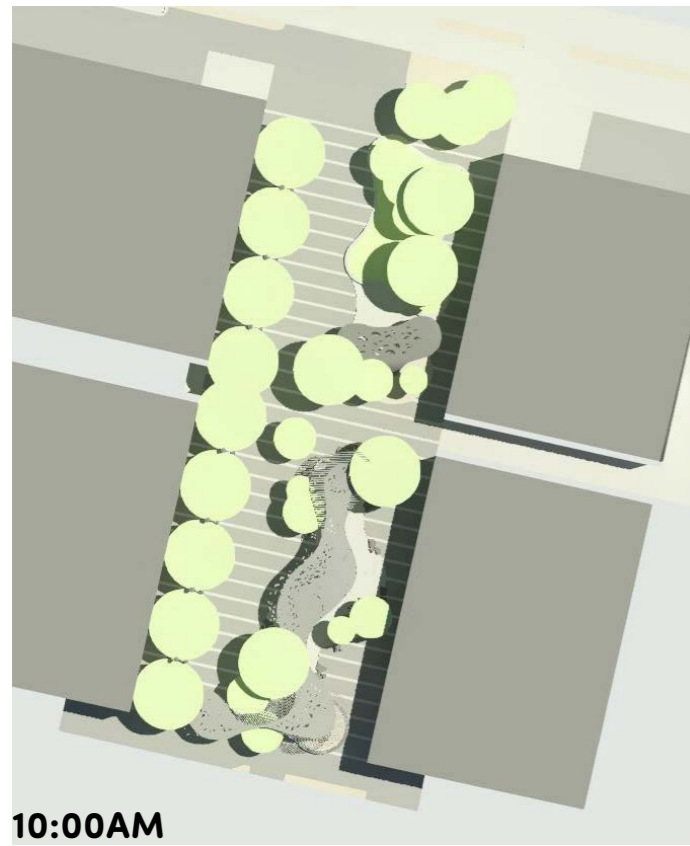


EVENT SCENARIO CONFIGURATION

-  Indicative Market stall
-  Indicative temporary stage
-  People (total shown 950)
Note: People quantities based on previous concept

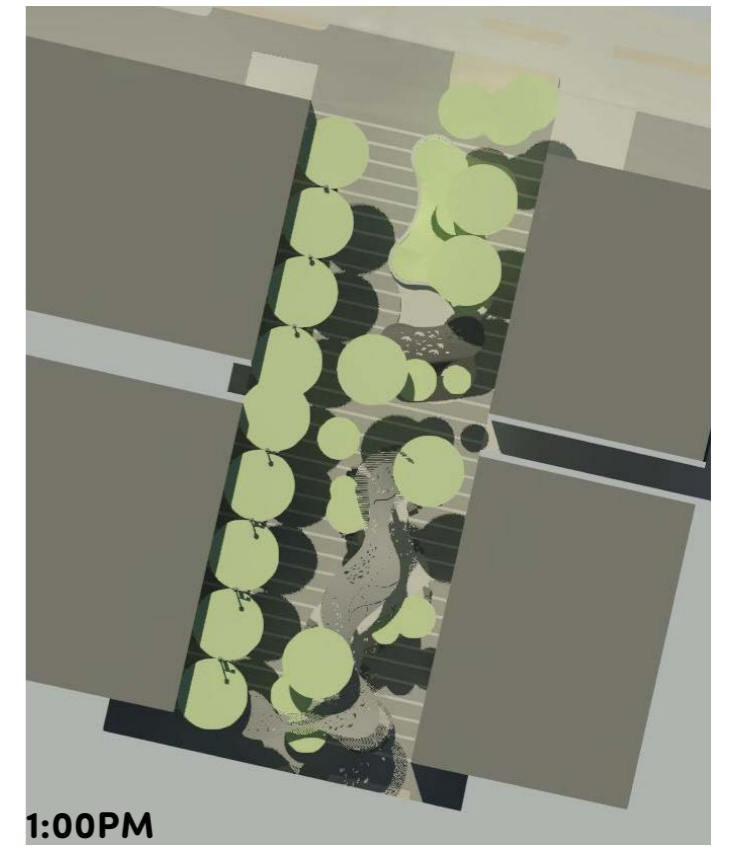


CIVIC SQUARE SUMMER SUN STUDY



Note: Buildings shown indicatively as 10m high



CIVIC SQUARE SUMMER WINTER STUDY



Note: Buildings shown indicatively as 10m high

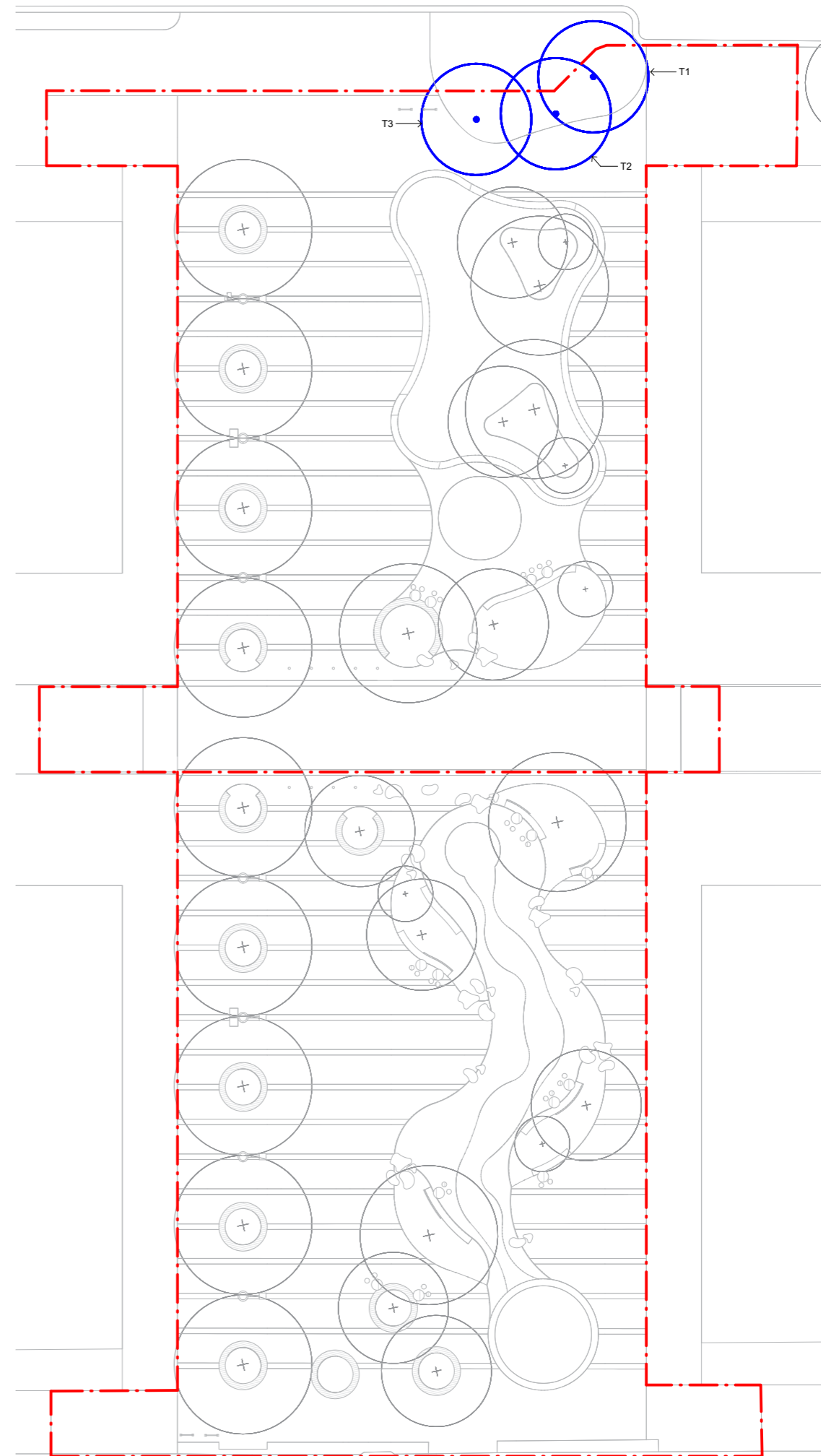
TREE MANAGEMENT PLAN

LEGEND

-  Trees to be retained
-  Trees to be removed

Tree ID.	Tree Species
1	Platanus x hybrida (London Plane)
2	Platanus x hybrida (London Plane)
3	Platanus x hybrida (London Plane)

NOTE:
Tree numbers and proposed management in accordance with arborist report. Refer arborist report for further information.



STAGE 1 & 2 PLANTING PALETTE

Trees



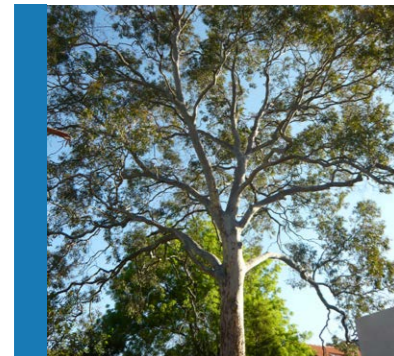
Row of deciduous Chinese Elm trees to provide good summer shade and sun in winter.

Ulmus parvifolia - Chinese Elm



Retain existing Plane trees on site

Platanus x hybrida - London Plane



Corymbia maculata - Spotted Gum



Angophora bakeri - Narrow-Leaved Apple



Melaleuca decora - Feather Honey myrtle

Mix of 3 tree species with diversity in bark, foliage, flower, colour for seasonal variation

MIX 1 - Native understorey mix | Total area - 403 m²

Shrubs - max 1m high



Dichopogon fimbriatus



Lissanthe strigosa



Arthropodium milleflorum



Ozothamnus diosmifolius



Daviesia ulicifolia



Indigofera australis



Dillwynia sieberi



Dianella revoluta

Groundcovers



Eremophila debilis



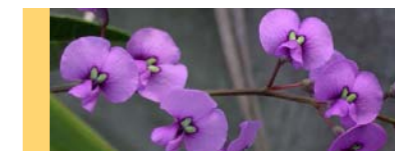
Einadia nutans



Billardiera scandens



Asperula conferta



Hardenbergia violacea (climber)



Dianella longifolia



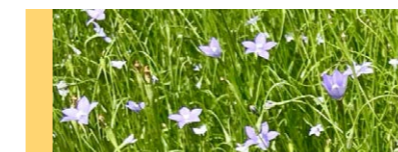
Hibbertia scandens (climber)



Lomandra filiformis



Myoporum parvifolium



Wahlenbergia gracilis



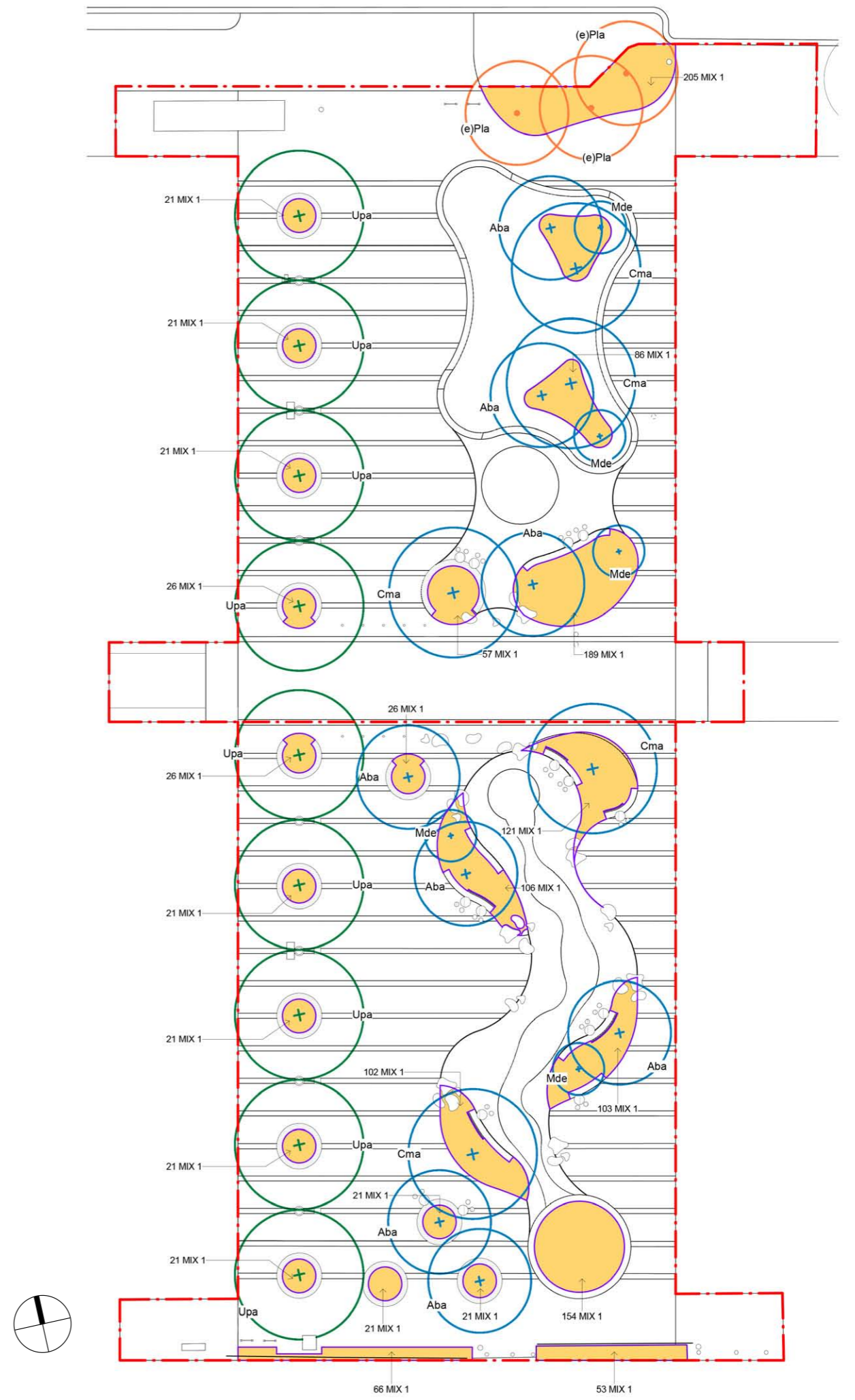
Pratia purpurascens



Dichondra repens

STAGE 1 & 2 PLANTING PLAN & SCHEDULE

PROPOSED PLANTING SCHEDULE						
CODE	BOTANICAL NAME	COMMON NAME	MATURE SIZE	CENTRES	POT SIZE	QUANTITY
TREE SPECIES						
Aba	Angophora bakeri	Narrow-Leaved Apple	(h)10m x (w)10m	As Shown	400lt	8
Cma	Corymbia maculata	Spotted Gum	(h)30m x (w)10m	As Shown	800lt	5
Mde	Melaleuca decora	White Feather Honeymyrtle	(h)6m x (w)4m	As Shown	400lt	5
Upa	Ulmus parvifolia	Chinese Elm	(h)13m x (w)10m	As Shown	800lt	9
GROUNDCOVERS AND CLIMBERS						
CODE	SPECIES	COMMON NAME	CENTRES(mm)	POT SIZE	QUANTITY	TOTAL AREA
MIX 1	Dichopogon fimbriatus Lissanthe strigose Arthropodium milleflorum Dillwynia sieberi Ozothamnus diosmifolius Daviesia ulicifolia Indigofera Australis Dianella revoluta Eremophila debilis Einadia nutans Billardiera scandens Wahlenbergia gracilis Asperula conferta Hardenbergia violacea (climber) Dianella longifolia Pratia purpurascens Hibbertia scandens (climber) Lomandra filiformis Myoporum parvifolium Dichondra repens	Nodding Chocolate Lily Peach Heath Pale Vanilla Lily Prickly Parrot-Pea Rice Flower Gorse Bitter Pea Australian Indigo Blueberry Lily Winter Apple Climbing Saltbush Apple Berry Sprawling Bluebell Common Woodruff False Sarsaparilla Blueberry Lily White Root Snake Vine Wattle Mat-Rush Creeping Boobialla Kidney Weed	500	200	1610	403 m ²



FEATURE ELEMENTS & MATERIALS PALETTE

PLAY ELEMENTS AND CANOPY STRUCTURE



ZERO DEPTH WATER PLAY FEATURE
(feature lit at night)



PLAYFUL ROCK FEATURES



STAGE 1 - CANOPY STRUCTURE



STAGE 2 - CANOPY STRUCTURE

PAVING



EXISTING STREETScape PAVEMENT
(match existing)



PEBBLECRETE UNIT PAVING
(Stretcher bond perpendicular to path of travel)



PEBBLECRETE PAVING BANDS

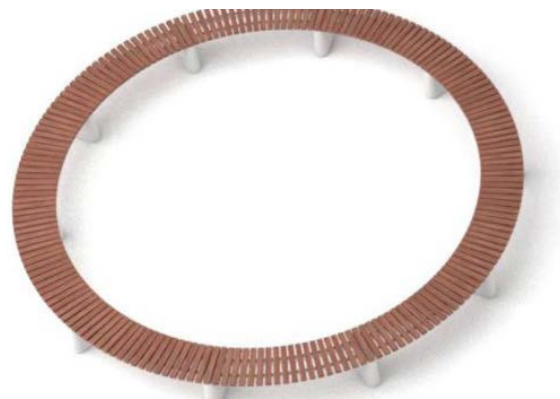


TEXT INLAYS IN CONCRETE PAVING BANDS
(site specific narrative text embedded)



FEATURE COBBLES TO WATER AREAS

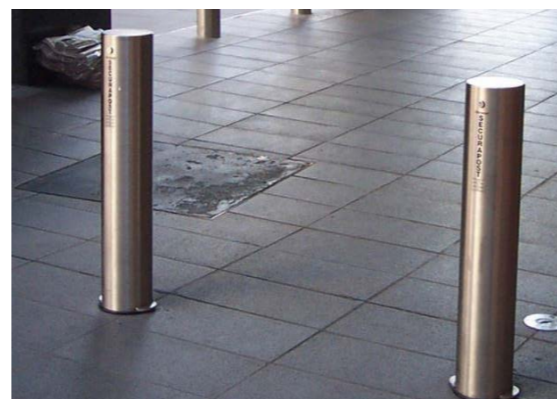
FURNITURE & FIXTURES



CIRCULAR TIMBER BENCHES



UNDULATING SEATING WALLS TO LAWN



REMOVEABLE BOLLARDS

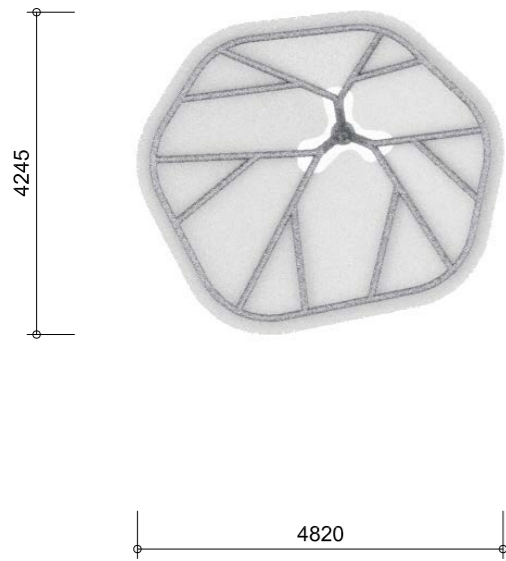


BICYCLE RACKS

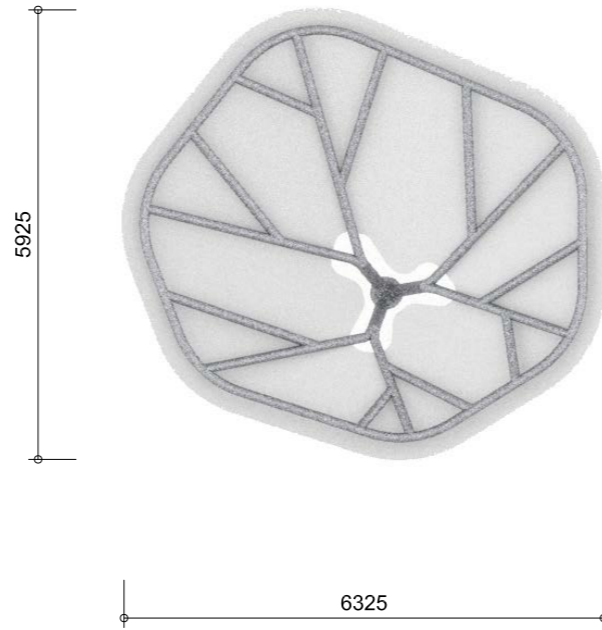


SMART POLES

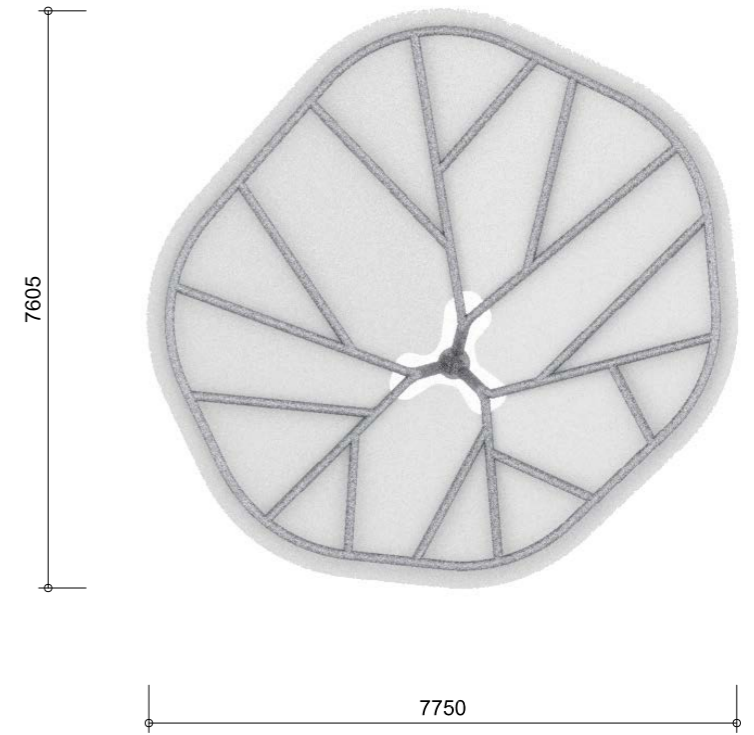
SHADE CANOPY - STAGES 1 & 2



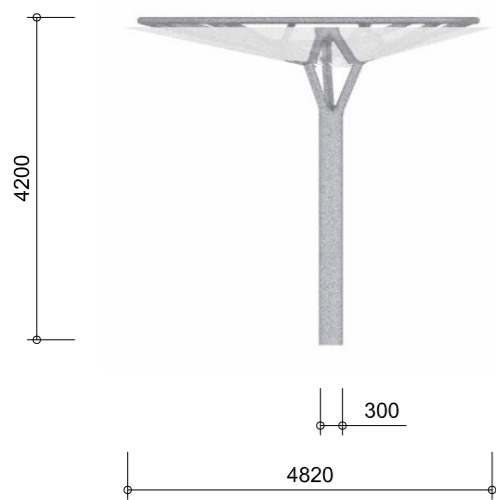
ELEMENT 1 - PLAN



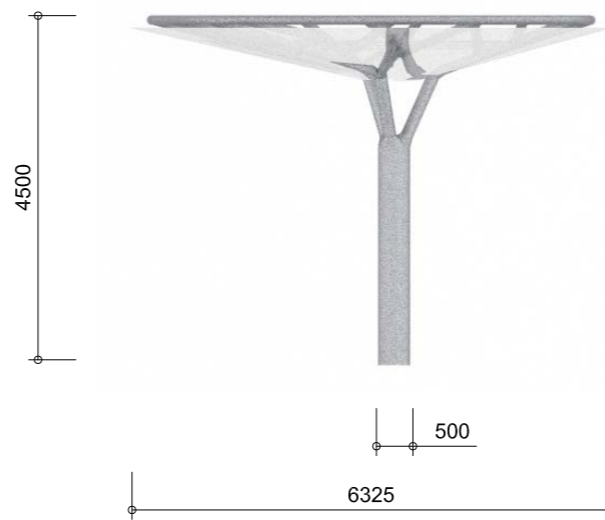
ELEMENT 2 - PLAN



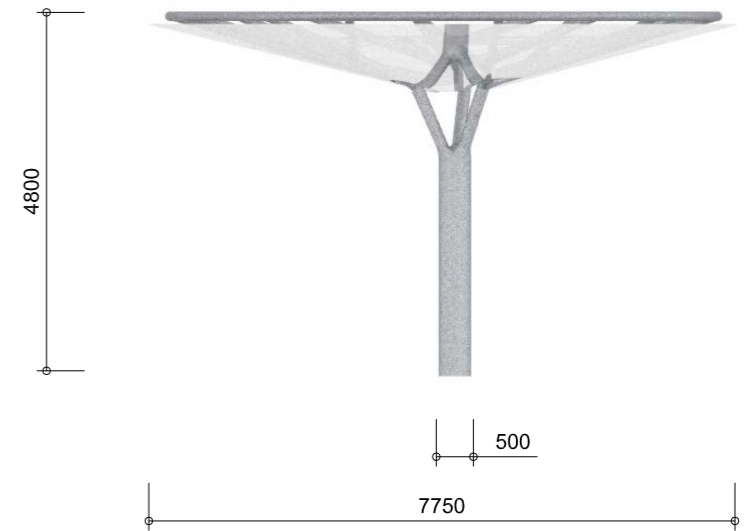
ELEMENT 3 - PLAN



ELEMENT 1 - ELEVATION



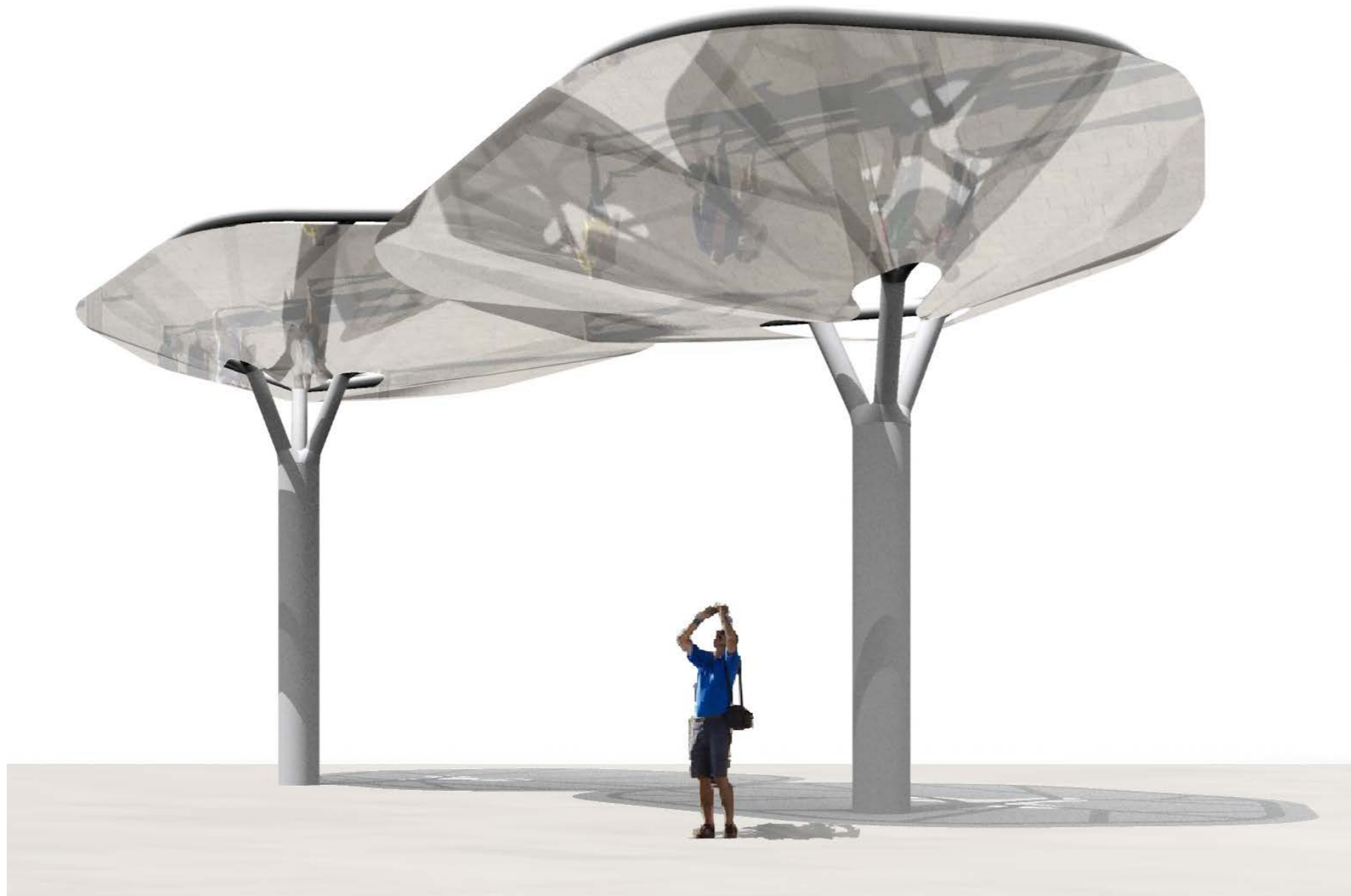
ELEMENT 2 - ELEVATION



ELEMENT 3 - ELEVATION



SHADE CANOPY - STAGE 1 PERSPECTIVES



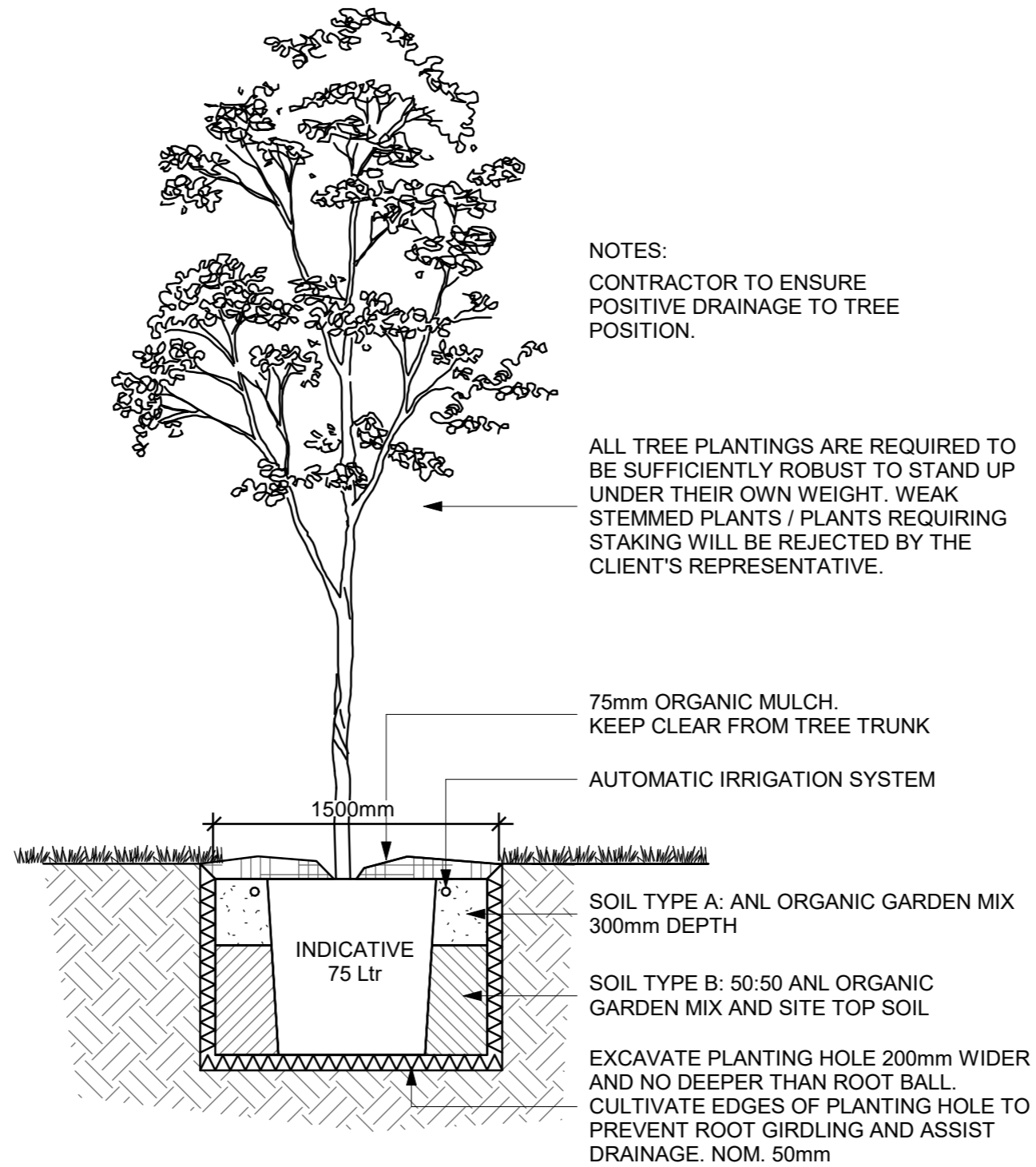
PERSPECTIVE - EYE VIEW

Mirror-polished stainless steel clad shade canopy. Perforated public artwork in progress.
Galvanised structural steel column and canopy framing.



PERSPECTIVE - BIRDS EYE VIEW

TYPICAL DETAIL - TREE PLANTING IN LAWN



LANDSCAPE SCHEDULE AND PLAN

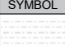






CODE	SYMBOL	ITEM/PRODUCT	DIMENSION	COLOUR + FINISH	SUPPLIER (or equal)	SHOP DRAWINGS	SAMPLES	NOTES	QTY	UNIT
PAVING										
HT		CovertLawn hybrid turf	To all proposed lawn areas.		HG Turf group www.hgturfgroup.com.au	-	Required		197	m2
P1a		Concrete Unit Paving	(L) 600mm x (W) 400mm. 80mm thick	PPX 95 Sandblasted finish	Pebblecrete www.pebblecrete.com.au	-	Required		1830	m2
P1b		Concrete Unit Paving (banding)	(L) 600mm x (W) 400mm. 80mm thick	PPX 114-45 Honed finish	Pebblecrete www.pebblecrete.com.au	-	Required		271	m2
P1c		Concrete Cobble Paving	(L) 100mm X (W) 100mm. 80mm thick	80-20% mix 80% PPX 95 Sandblasted finish. 20% PPX 114-45 Honed finish	Pebblecrete www.pebblecrete.com.au	-	Required		204	m2
P1d		Concrete Cobble Paving (banding)	(L) 100mm X (W) 100mm. 80mm thick	PPX 114-45 Sandblasted finish	Pebblecrete www.pebblecrete.com.au	-	Required		27	m2
P2a		Concrete Unit Paving	(L) 100mm x (W) 100mm. 40mm thick	80-20% mix 80% PPX 95 Sandblasted finish. 20% PPX 114-45 Honed finish	Pebblecrete www.pebblecrete.com.au	-	Required		237	m2
P2b		Concrete Unit Paving	(L) 100mm x (W) 100mm. 40mm thick	20-80% mix 20% PPX 95 Sandblasted finish. 80% PPX 114-45 Honed finish	Pebblecrete www.pebblecrete.com.au	-	Required		106	m2
P3		Concrete Cobble Paving (threshold ramps)	(L) 100mm x (W) 100mm. 40mm thick	PPX 114-45 Sandblasted finish	Pebblecrete www.pebblecrete.com.au	-	Required		31	m2
P4		Concrete Unit paving as per Council public domain plans	Refer to Council Public Domain plans	Refer to Council Public Domain plans	Pebblecrete www.pebblecrete.com.au	-	Required		141	m2

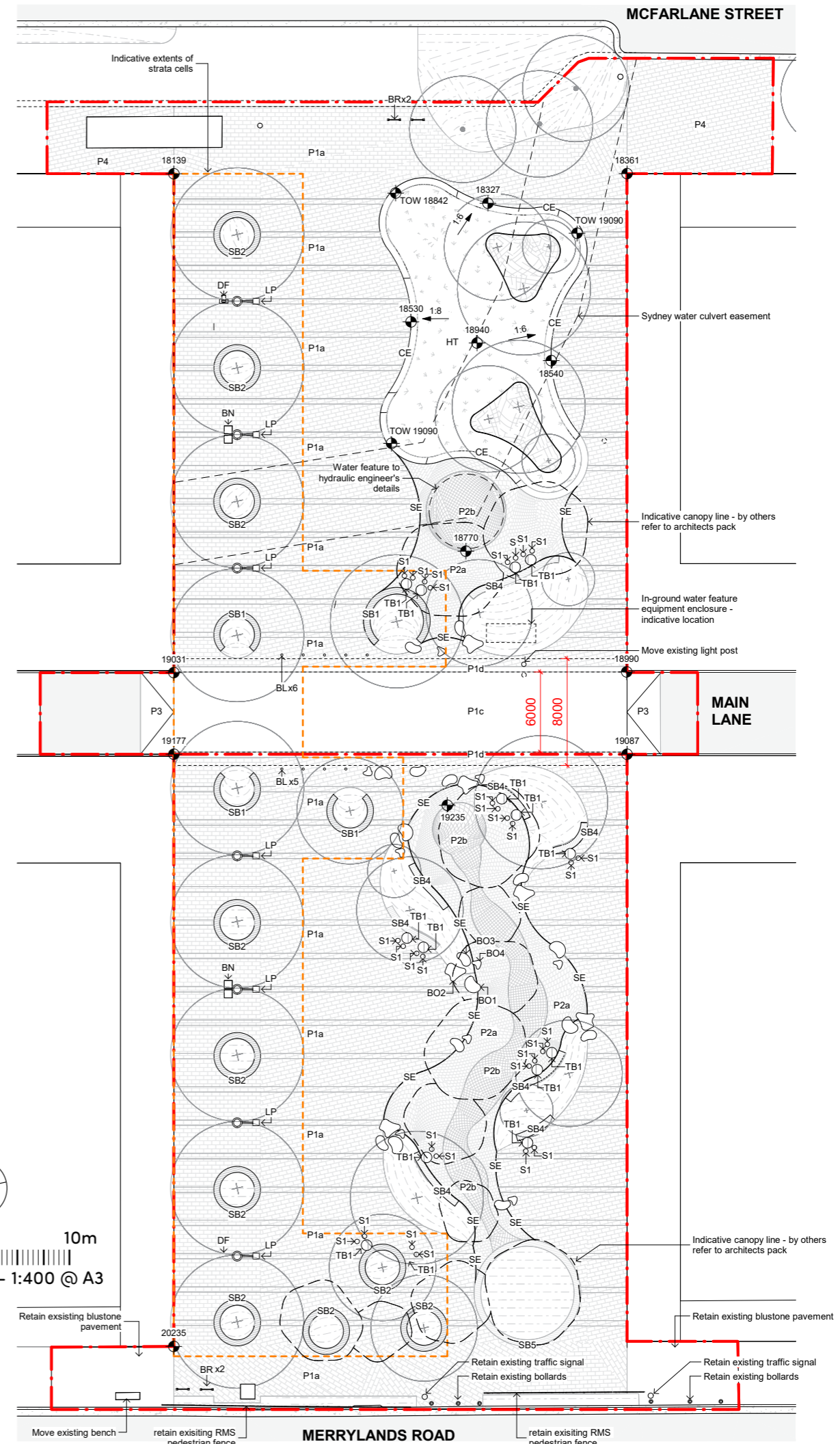
FURNITURE AND FIXINGS

BL		Slimline 150NB removable bollard	(Dia)160 x (H) 900mm	Stainless Steel	Leda Security www.ledasecurity.com.au	Required	Required		9	no.
BN		Dual Smart Solar Bin - Recycling, Litter and Cigarette butts (Manufacturer to council's selection)	To manufacturer's Specification			Required	Required		2	no.
BO1		Bolder Seating elements	As shown on plan. (H) 500mm (max.)			Required	Required		6	no.
BO2		Bolder Seating elements	As shown on plan. (H) 500mm (max.)			Required	Required		8	no.
BO3		Bolder Seating elements	As shown on plan. (H) 500mm (max.)			Required	Required		15	no.
BO4		Bolder Seating elements	As shown on plan. (H) 500mm (max.)			Required	Required		9	no.
BR		Cyclist Hoop Standard - Bike rack	(H) 800	Stainless Steel	Civiq www.civiq.com.au	Required	Required		4	no.
DF		Aquaffi Flex Fountain 1500BF	(H) 1500	Stainless Steel	Civiq www.civiq.com.au	Required	Required		2	no.
LP		Smart light pole (Manufacturer to council's selection)	To manufacturer's Specification			Required	Required		7	no.
S1		Flip stool	Ø:350mm H:450mm	Top: Hardwood Base: Steel powder coated black	Moss Urban www.mossurban.com	Required	Required		30	no.
SB1		Reforma circular timber bench	(L) x (W) As shown on plan. (H) 500mm	Battens: Tropical Hardwood Legs: SCC Concrete	mmcite www.mmcite.com	Required	Required		3	no.
SB2		Reforma circular timber bench	(L) x (W) As shown on plan. (H) 500mm	Battens: Tropical Hardwood Legs: SCC Concrete	mmcite www.mmcite.com	Required	Required		10	no.
SB3		Reforma circular timber bench	(L) x (W) As shown on plan. (H) 500mm	Battens: Tropical Hardwood Legs: SCC Concrete	mmcite www.mmcite.com	Required	Required		1	no.
SB4		Reforma linear timber bench	(L) x (W) As shown on plan. (H) 500mm	Battens: Tropical Hardwood Legs: SCC Concrete	mmcite www.mmcite.com	Required	Required		8	no.
SB5		Reforma timber bench - Wall top mounted	(L) x (W) As shown on plan	Battens: Tropical Hardwood Legs: SCC Concrete	mmcite www.mmcite.com	Required	Required		1	no.
TB1		Verge Round Café Table - Pedestal	Ø:750mm H:730mm	Top: Hardwood Base: Steel powder coated black	Moss Urban www.mossurban.com	Required	Required		15	no.

WALLS										
CE		Varied height edge to lawn area	(w)500mm x (h) varied	precast concrete - with public art integration	Reckli www.reckli.com	Required	Required		63	Lin.m
SE		Steel Edge	6mm thick x 100mm height	Finish: Hot dipped galvanised	Ideal Edging - 02 9526 7606	Required	Required	Finish flush with adjacent pavement as shown on landscape plans.	178	

SOFTWORKS

SF CODE	SF SYMBOL	SF ITEM	SF SUPPLIER	SF DIMENSION	Comments	QTY.	UNIT
-		Proposed Planting	-	-	Hold point for preparation of subsoil. Earth cutting required to achieve nominated growing medium depths. All specimens to Natspec specification. Refer to planting schedules for quantity	339	m2
-		Proposed Lawn	-	-	Hold point for preparation of subsoil. Natural turf to grow through HT Hybrid turf product	196	m2
-		Existing Tree - to be retained	-	-	-	3	no.
-		Existing Tree - to be removed	-	-	-	0	no.
-		Proposed Tree	-	-	Inspection of setback & specimen quality on site prior to installation. All specimens to Natspec specifications. Refer to details. Refer to planting 29 schedules for quantity	29	no.
-		Organic Mulch	-	-	Forest Blend? Course 20-40mm gold coloured chip, made from 100% recycled grade A wood waste.	70	m2
-		StrataVault	CityGreen www.citygreen.com	Dimensions to manufacturer specification	Refer to GA plan for area. StrataVault to have 3 layers.	1028	m2



turf

SYDNEY

35 Wellington St

Chippendale

NSW 2008

P (02) 8394 9990

ABN: 77 097 739 663

turfdesign.com