

DEVELOPMENT APPLICATION - LANDSCAPE REPORT

MERRYLANDS CIVIC SQUARE, 16 MEMORIAL AVENUE, MERRYLANDS

17TH DECEMBER 2021

PREPARED FOR



PREPARED BY



CONTENTS

| | | | |
|---|----|--|----|
| ACKNOWLEDGEMENT OF COUNTRY | 3 | EVENT SCENARIO CONFIGURATION | 22 |
| DESIGN TEAM | 4 | CIVIC SQUARE SUMMER SUN STUDY | 23 |
| PUBLIC DOMAIN VISION | 5 | CIVIC SQUARE SUMMER WINTER STUDY | 24 |
| SITE ANALYSIS | 6 | TREE MANAGEMENT PLAN | 25 |
| SITE ANALYSIS | 7 | STAGE 1 & 2 PLANTING PALETTE | 26 |
| CONTEXT PLAN AND STAGES | 8 | STAGE 1 & 2 PLANTING PLAN & SCHEDULE | 27 |
| STRUCTURE PLAN | 9 | FEATURE ELEMENTS & MATERIALS PALETTE | 28 |
| DESIGN STATEMENT | 10 | SHADE CANOPY - STAGES 1 & 2 | 29 |
| STAGE 1 PUBLIC DOMAIN PLAN | 12 | SHADE CANOPY - STAGE 1 PERSPECTIVES | 30 |
| STAGE 2 PUBLIC DOMAIN PLAN | 13 | TYPICAL DETAIL - TREE PLANTING IN LAWN | 31 |
| PRECEDENT IMAGERY | 14 | LANDSCAPE SCHEDULE AND PLAN | 32 |
| STAGE 1 SECTION & 3D VIEW | 15 | APPENDIX A INDIGENOUS ENGAGEMENT | 35 |
| STAGE 1 SECTION & 3D VIEW | 16 | APPENDIX B LIGHTING DESIGN | 36 |
| STAGE 1 VIEW LOOKING SOUTH | 17 | | |
| STAGE 2 SECTION & 3D VIEW | 18 | | |
| STAGE 2 VIEW LOOKING NORTH TOWARD MAIN LANE | 19 | | |
| LANDSCAPE LEVELS AND DRAINAGE STRATEGY | 20 | | |
| PUBLIC ART INTEGRATION OPPORTUNITIES | 21 | | |

ACKNOWLEDGEMENT OF COUNTRY












We acknowledge Bidjigal Darug Country, the Cultural Landscape that we are working upon, We acknowledge the custodianship of its people and the privilege and responsibility to Connect with Country.

As a team we are guided by the inspiration of Country, the stories and knowledge this place contains and has to share. We acknowledge its contribution to both mental and physical wellbeing, providing a refuge and safe place for all to learn and share.

Our Vision is that sensing and caring for Country is something that transcends cultural differences and highlights the many values that are similar across the cultures of our contemporary communities. Supporting a socially inclusive, resilient, and innovative community based on, honouring the wisdom and kinship of all cultures, captured through the lens of custodianship.

Our approach in this document is to bring social, cultural and environmental values of connecting to Country as a reciprocal framework, where Country is regenerated, and design excellence is inspired by Country.

DESIGN TEAM

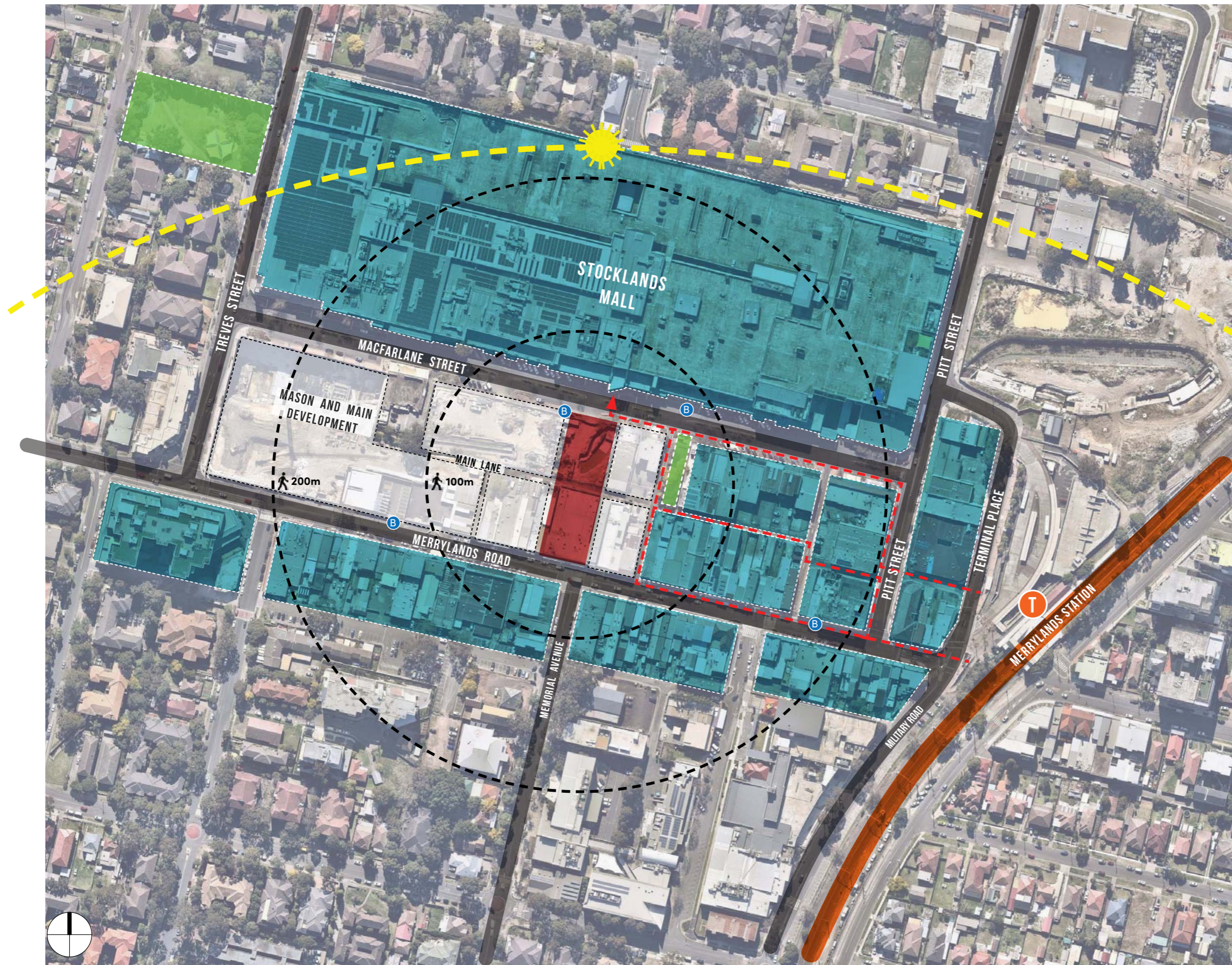
| | | | |
|---|---|---|---|
| Public Domain and Landscape | Indigenous Consultant | Traffic Consultant | Civil Engineer Structural engineer |
|  |  |  |  |
| TURF DESIGN STUDIO | YERRABINGIN | TTW | ENSTRUCT |
| Quantity Surveyor | BCA Consultant | Town Planner | Access / DDA Consultant |
|  |  |  |  |
| MBM | CITY PLAN | GYDE CONSULTING | MORRIS GODING |
| Architect | Arborist | Lighting Consultant | |
|  |  |  | |
| Lacoste+Stevenson | AUSTRALIS TREE MANAGEMENT | Lighting Art & Science | |

PUBLIC DOMAIN VISION

An important **new place** in the heart of Merrylands; a key link **diverse** in its offerings with places to move, play, dwell and take part in **community** life.



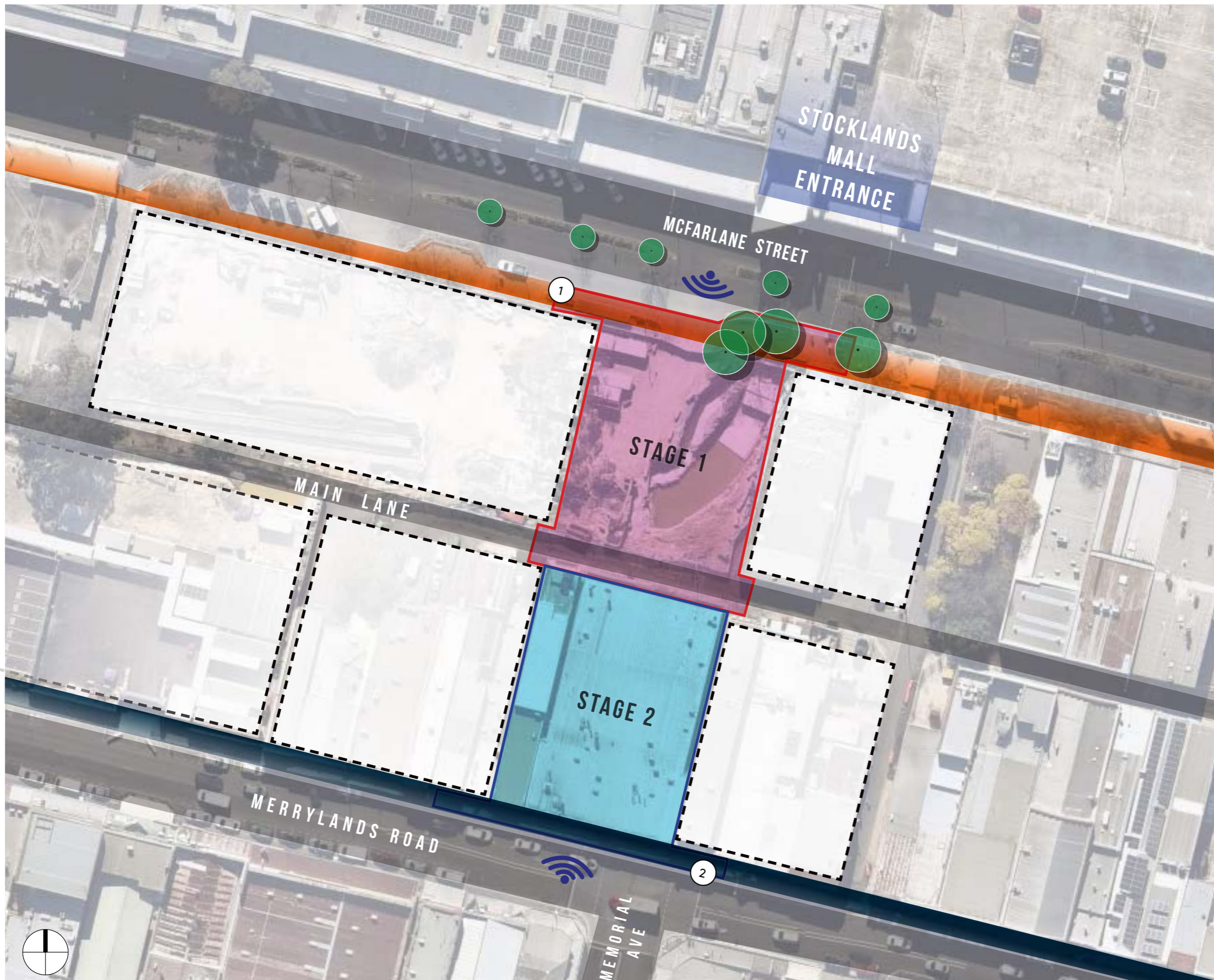
SITE ANALYSIS









LEGEND

- Civic Square site
- Roads
- Existing commercial buildings
- Local green spaces
- Future development
- - Pedestrian pathways
- T Train station
- B Existing bus stops

SITE ANALYSIS



LEGEND

-  Future development
-  Existing trees
-  Existing roads
-  Existing brick paving along McFarlane Street
-  Existing Bluestone paving along Merrylands Road
-  Noise – vehicular traffic along both streets

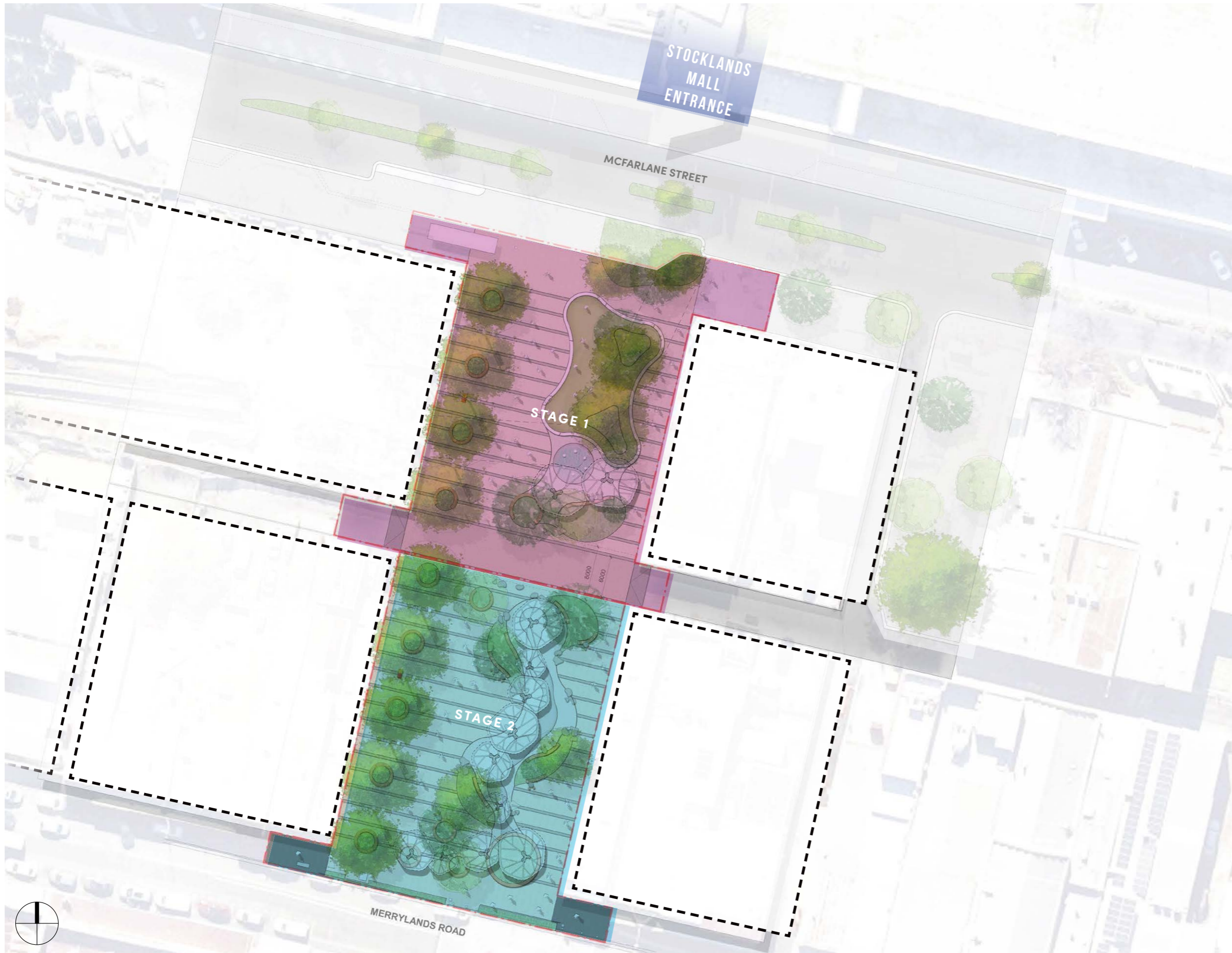


① Existing brick paving and bus shelter along McFarlane Street





② Existing Bluestone paving and crossing along Merrylands Road

CONTEXT PLAN AND STAGES



LEGEND

-  Future development
-  Existing roads

STRUCTURE PLAN

- ① 3m wide future development buffer
Maintain minimum clear width offset from edges to ensure flexibility to marry design into future adjacent developments.
- ② 3.5m wide tree line
Introduce shading and amenity on main pedestrian walkway through tree planting with integrated urban elements, i.e seating and Smart poles.
- ③ 9m wide main pedestrian walkway
Ensure walkway width is sufficient to accommodate market events with stalls on either side with adequate pedestrian circulation in between.
- ④ 16m wide green link
More informal, loose configuration of urban elements and large native tree planting. Water features, canopy structures, play elements and large lawn area.
- ⑤ 196m² open lawn area for lounging and seating.
- ⑥ Zero depth water play area to provide interactive play and cooling amenity to the square.
- ⑦ Pergola structure to provide cooling and potential art integration.
- ⑧ Hostile vehicle mitigation
Urban elements that integrate with the canopy structure to both frame and activate the entrance to the Square and to also provide hostile vehicle mitigation from straight on approaches from Memorial Ave.



DESIGN STATEMENT



CONNECTING TO COUNTRY

Merrylands Civic Square has been designed to integrate and align with Connecting to Country principles. We all have the responsibility to care for Country and to respect and learn from Indigenous people.

The design team includes Indigenous knowledge holders and design thinkers Yerrabingin whose work has been collaboratively integrated into the scheme.

Strong connection to the flora and fauna of Merrylands have been drawn upon and expressed in various ways including warm paving tones and linear banding reflecting the Wianamatta Shale strata; indigenous planting celebrating the six D'harawal annual seasons; and native fauna inspiring a canopy design.

Future opportunities to embed Indigenous culture, history and values lie in further engagement with the local Aboriginal community, expression through public art elements, and then ultimately the Square becoming a place for the community, celebrating all of the rich and diverse cultures in and around Merrylands.

PROJECT OVERVIEW

Merrylands Civic Square will contribute to the creation of a vibrant new destination in Merrylands. Located centrally in the city centre, this site has an important responsibility to become an icon of Merrylands, represent the local character, communicate its history and connection with country, and connect with the surrounding community.

Activation potential for this precinct has been significantly increased with the recent commencement of The Mason and Main residential and commercial development at the doorstep of the proposed Civic Square site.

The proposed design offers a new public domain and paves the way for future development to further enhance the quality of public space the city has to offer.

PUBLIC DOMAIN

The Civic Square design is comprised of a 3m clear width paved zone at its western and eastern edges to ensure future development is able to marry into the site, a tree-line of large canopied trees at the western edge to provide shade, a 9m wide pedestrian link between Merrylands and McFarlane street, and a 16m wide Landscaped zone.

Within the green lane a large lawn area, a water play space, an ephemeral creek and large planters have been designed throughout. Furthermore, the design also considers the Square as a important event space and meeting place for the city. As such the Square has been

designed to allow for large scale events that require market stalls and temporary stage locations whilst also providing the space for smaller-scaled human interactions.

URBAN ELEMENTS

The design considers the Square to become a major public space and urban escape for the residents of Merrylands, and as such the urban elements within the square have been designed and selected to provide a range of uses and valuable amenity for its occupants.

Due to the high urban heat the Cumberland City Council area experiences, urban elements such as paving have been designed to mitigate urban heat effects. As such light toned pavers have been selected for all paved areas. This will ensure that the square provides a cool space for occupants. Additionally, misting systems, the water play area, shade canopy and generous tree planting will also provide cooling the Square.

A range of formal and informal seating and furnishing offerings have also been integrated to provide ample seating amenity, and planted zones have been designed to provide visual diversity and greening.

CPTED

CPTED has been considered throughout the design with clear sight lines across the space. Trees would have a 2m clear stem and shrub planting would be kept below 1m height maximum.

Smart poles and feature lighting provide ample light at night-time.

Skate deterrents have been passively integrated into the design to prevent damage of urban elements. Paving can have raked jointing in areas where skaters would run up to seating elements to create an undesirable bumpy surface that is still smooth for walkers.

The integration of public art pressed into the concrete creates an uneven finish that will deter skaters along the concrete seating edge to the lawn area.

LIGHTING

Lighting of Square will be provided to ensure good visibility and the sense of safety with safe levels of illumination for movement connecting with the surrounding street lighting. Furthermore, lighting will also be incorporated as a design feature furthering the night-time activation of the square.

DESIGN STATEMENT



ACCESSIBILITY

Gentle gradients provide accessibility for all age groups and degrees of mobility ensuring that users can move through the site with ease. All ground surfaces have been designed in accordance with AS1428.

DRAINAGE AND IRRIGATION

Drainage design will be consistent with overall stormwater requirements, paving will be drained away from proposed building edges and into proposed storm water infrastructure. Wherever possible passive drainage will water garden beds and trees thereby reducing stormwater runoff.

Consideration has been given to the incorporation of low water demand and low maintenance plant species in all areas to reduce mains consumption and fertiliser contamination of drainage water.

SOIL

The planting will comprise a mix of indigenous species. Soil requirements will therefore be chosen specifically for soil chemistries enjoyed by indigenous species. For indigenous vegetation, soil profiles will be provided which have modest nutrient levels, particularly low phosphorus.

Suggested material would equal Australian Native Landscapes 'Low P' mixture.

Trees in paving will have advanced planting methods including strata supporting cells (e.g. StrataVault or equal) to ensure generous root zones, allowing the trees to flourish, whilst also protecting the paving from root impacts.

PLANT ESTABLISHMENT AND MAINTENANCE

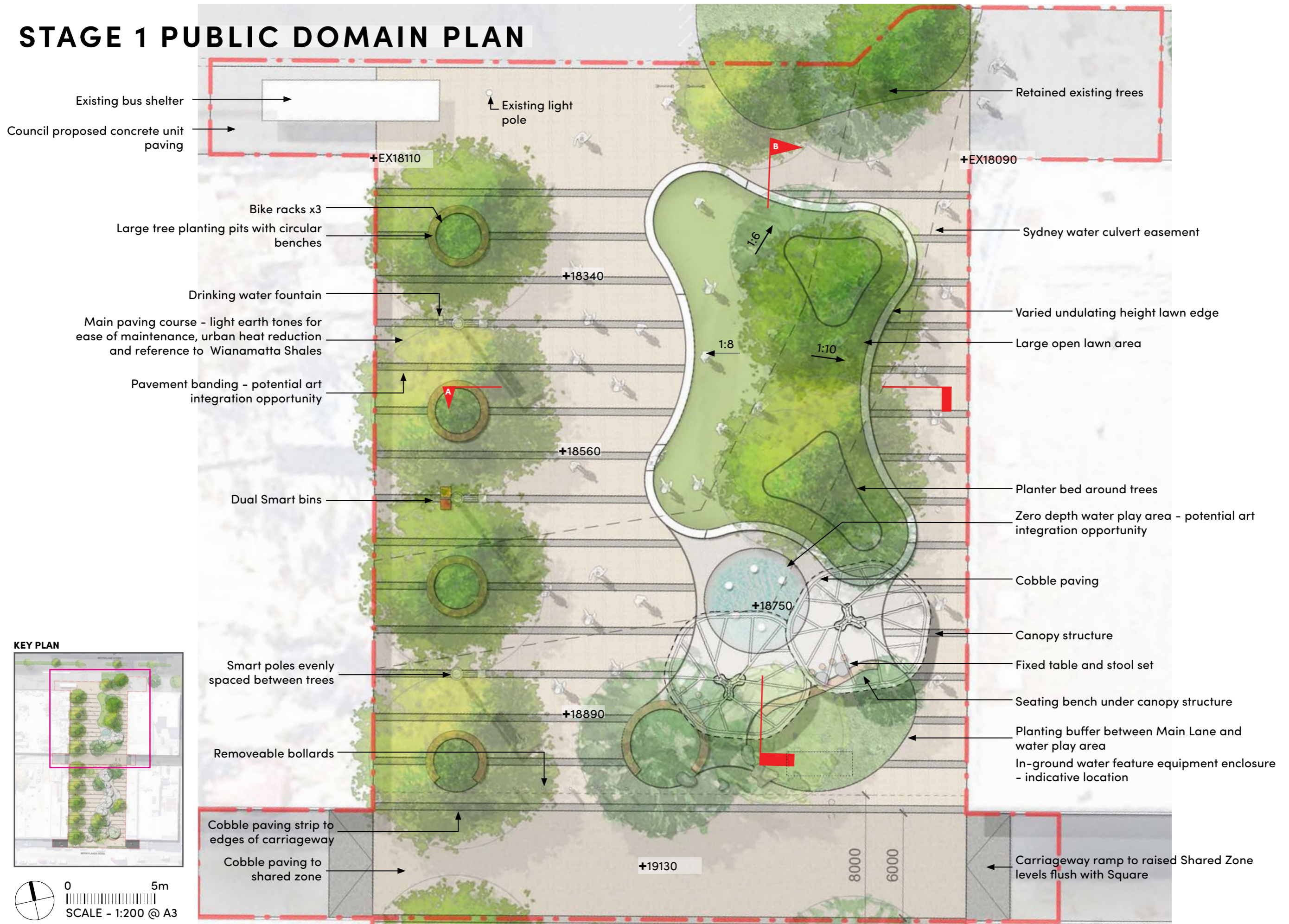
A landscape maintenance contractor will be engaged to keep all plant material in a state of health and vigour after practical completion. The appointed contractor must provide the Superintendent with a proposed maintenance works program for approval. The landscape contractor must keep a logbook of all maintenance works undertaken and include 'works to date' information with all progress payment invoices. Works will include, but not be limited to:

Monitoring the irrigation system on a weekly basis to ensure plants are not under or over irrigated,

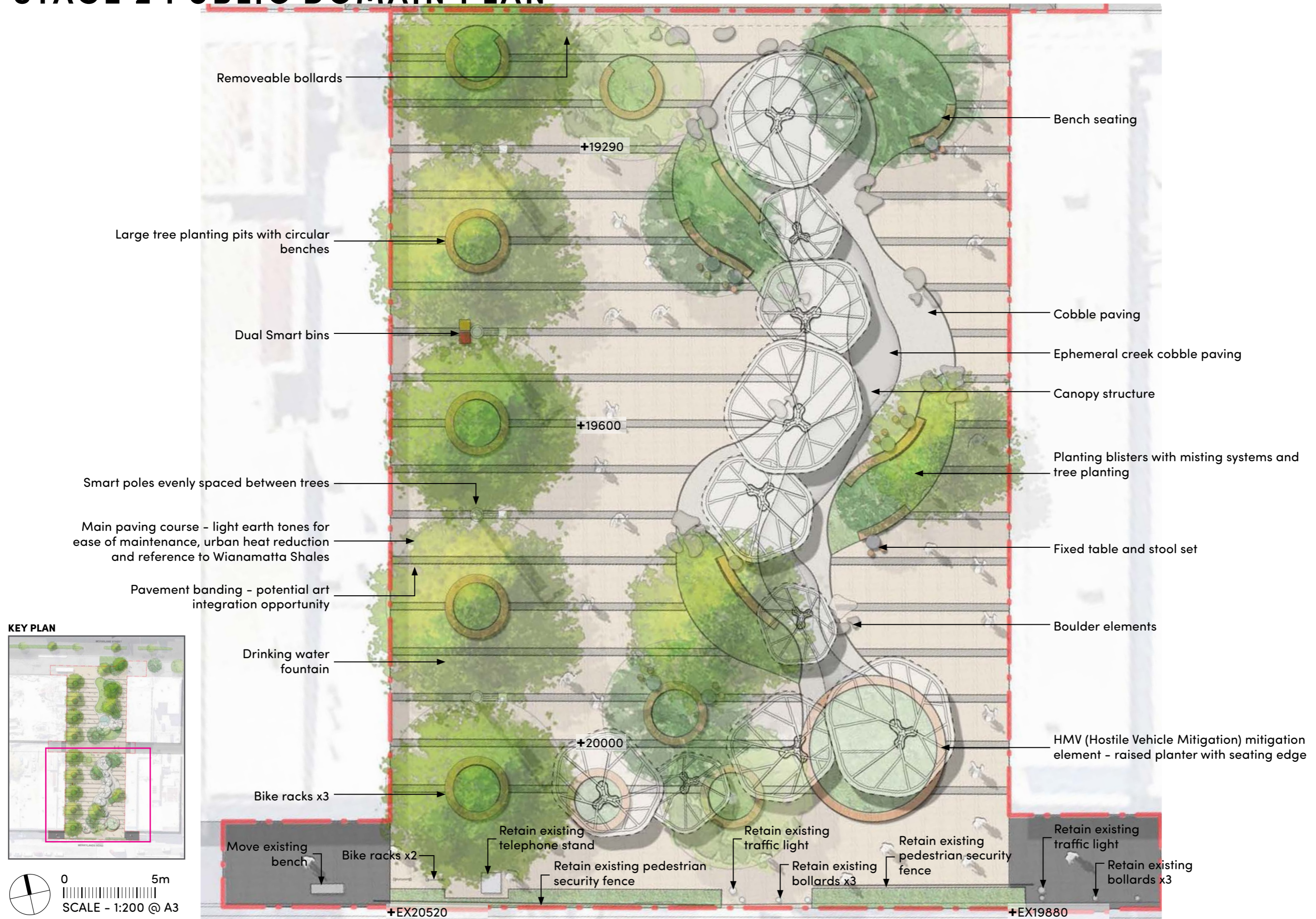
- Replacing dead plant material to achieve a complete cover of planting without obvious gaps in planting at final completion,

- Replenishment of mulch as required to provide cover to the soil surface minimizing weed encroachment,
- Suppression of weed growth,
- Low phosphorus nutrient will be provided to native plant groupings,
- Selective pruning / crown lifting / canopy shaping of trees to remove potential future structural defects, establish branching above head height, etc.

STAGE 1 PUBLIC DOMAIN PLAN



STAGE 2 PUBLIC DOMAIN PLAN

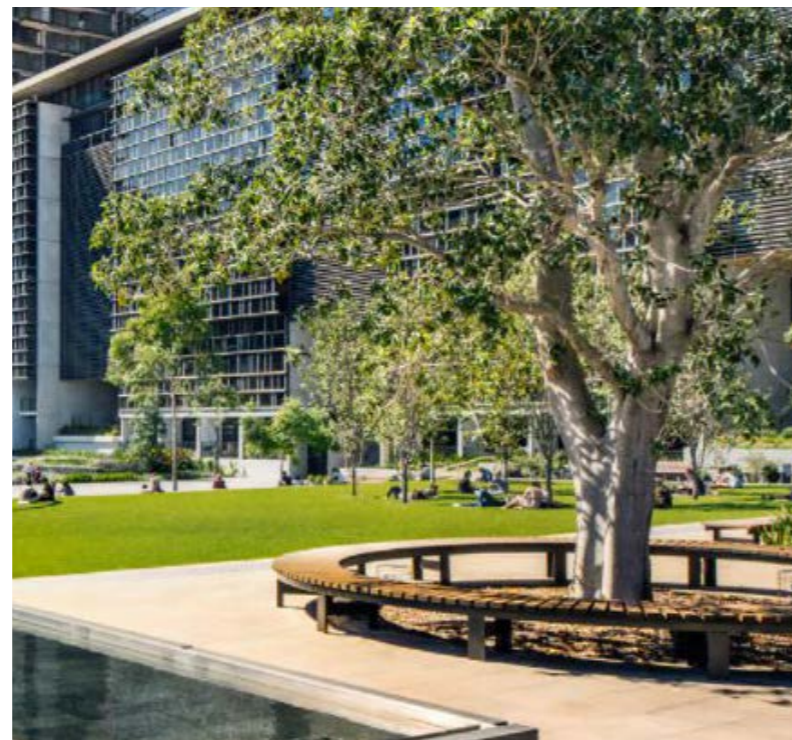


PRECEDENT IMAGERY



1. Sydney University

A civic link with sun and shade, a clear movement route, greenery and places to stop and dwell.



2. Yagan Square

A playful water narrative with seating, water and a canopy structure for shade. Connecting to Country and public art are integrated into the fluid design.

3. Chippendale Green

Large feature trees provide shade with circular seating allowing variety in where to sit and look out into the space.

STAGE 1 SECTION & 3D VIEW

- ① Lawn area.
- ② Medium to large tree planting in lawn area.
- ③ Large deciduous tree.
- ④ 9m wide pedestrian path.
- ⑤ 3m buffer zones to future developments.
- ⑥ Main paving course - light earth tones for ease of maintenance and urban heat reduction.
- ⑦ Pavement banding.
- ⑧ Smart poles evenly spaced between trees.
- ⑨ Bench seating and planting beneath deciduous tree.
- ⑩ Varied height (max.500mm) undulating raised seating edge to lawn area.



KEY PLAN



STAGE 1 SECTION & 3D VIEW

- ① Lawn area.
- ② Medium to large tree planting in lawn area.
- ③ Stage 1 canopy - By Architects.
- ④ Zero depth water play area.
- ⑤ Main paving course - light earth tones for ease of maintenance and urban heat reduction.
- ⑥ Pavement banding.
- ⑦ Cobble paving.
- ⑧ Bench seating.
- ⑨ Fixed table and stool set.
- ⑩ Varied height (max.500mm) undulating raised seating edge to lawn area.



KEY PLAN

